



## Bridgewater Square, EC2Y

£650,000

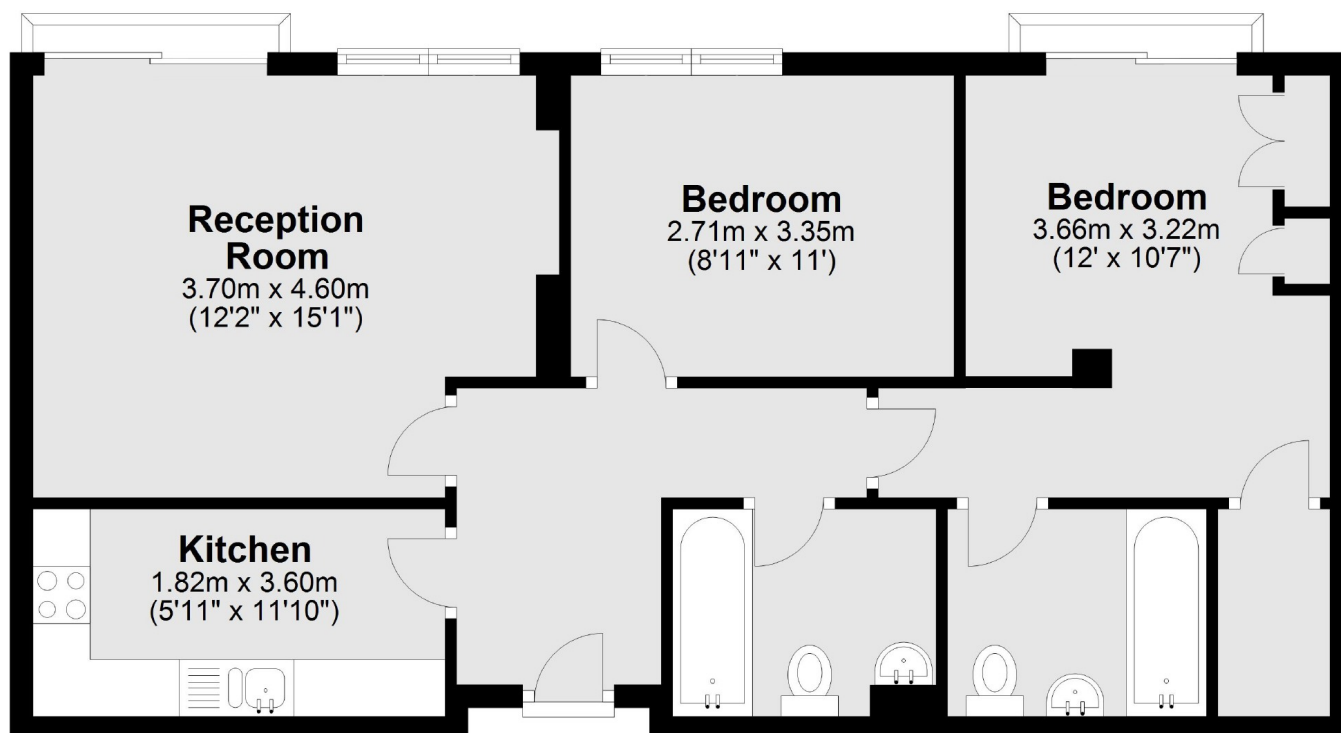
This two double bedroom, two bathroom apartment is located in the Cobalt Building and has a separate living room and kitchen with integrated appliances. The property is well-configured and offers well proportioned rooms throughout. The property includes an allocated parking space and is chain free.

The Cobalt Building is located about a quarter mile from Barbican Underground station, a half mile from Moorgate underground station and just over a half mile to St Paul's underground station.

### Features

- Great Location
- Excellent Transport Links
- Juliette Balcony
- Daytime porter
- Fifth floor
- Lift

# Bridgewater Square, London, EC2Y



Total area: approx. 63.4 sq. metres (682.7 sq. feet)