



## Mile End Road, E1

£365,000

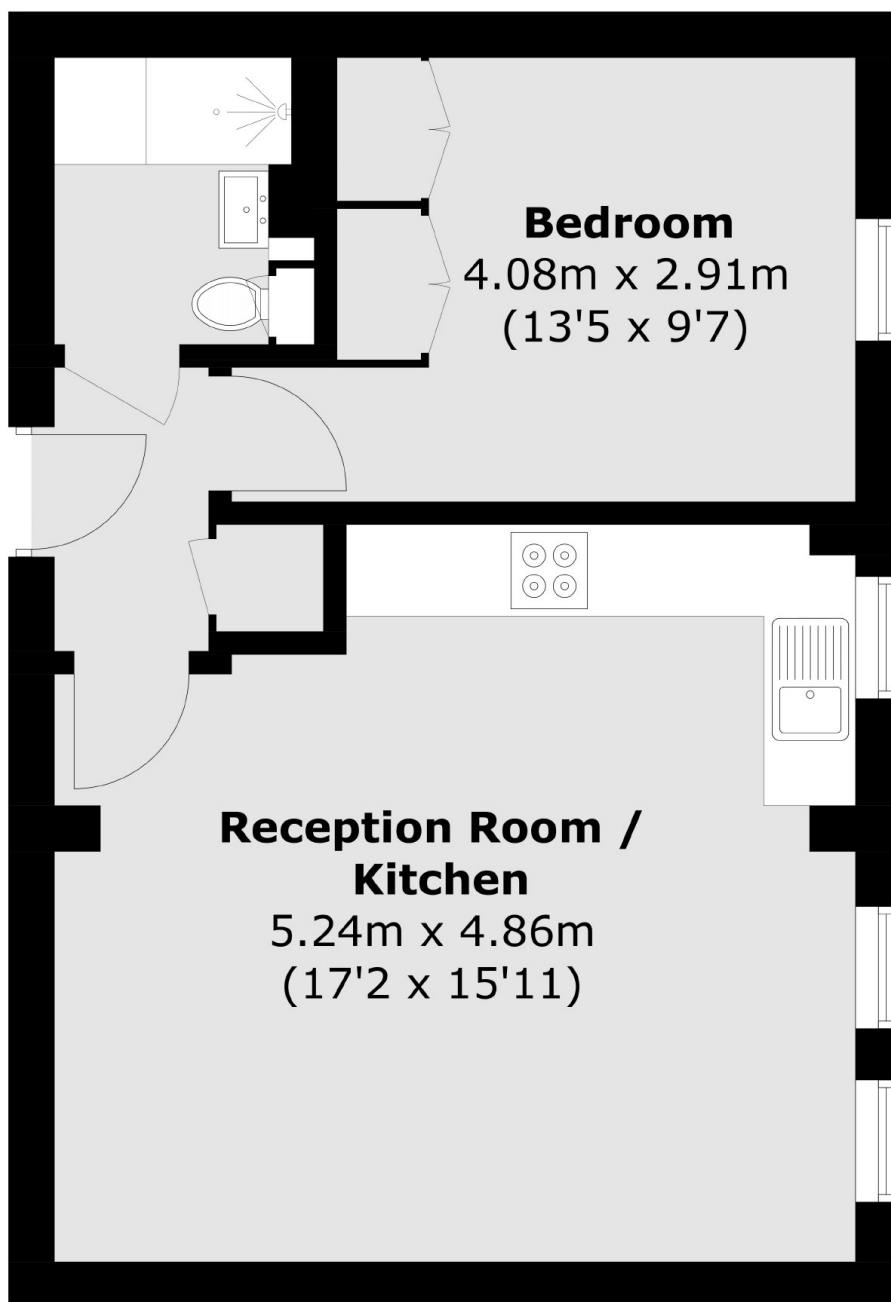
This one bedroom apartment is set on the first floor of a purpose-built block that is centrally located within minutes to Stepney Green Station. The property is comprised of an open plan living kitchen and reception room, a large double bedroom with built in storage, a shower room and secure off-street parking.

The property offers excellent transport links and is situated close to Stepney Green Underground station as well as Whitechapel for the Elizabeth Line, offering easy access into the City and Canary Wharf. This property is within walking distance to Brick Lane, Shoreditch and Spitalfields. Mile End Park and Victoria Park are also within a short walk.

### Features

- One Bedroom
- Open Plan Kitchen/Reception
- Secure Off-Street Parking
- Stepney Green Station Nearby
- Close to Amenities

# Mile End Road, London, E1



Total area (approx.): 41.5 sq. m (446.7 sq. ft)

**Dexters**

Shoreditch  
44 Great Eastern Street  
London  
EC2A 3EP  
Sales  
0207 483 6371

Energy Rating: C. We aim to make our particulars both accurate and reliable. However they are not guaranteed; nor do they form part of an offer or contract. If you require clarification on any points then please contact us, especially if you're traveling some distance to view. Please note that appliances and heating systems have not been tested and therefore no warranties can be given as to their good working order.

 **RICS** | Regulated  
Estate Agent  
and Letting Agent

[dexters.co.uk](http://dexters.co.uk)