



Wood Close, E2

£399,995

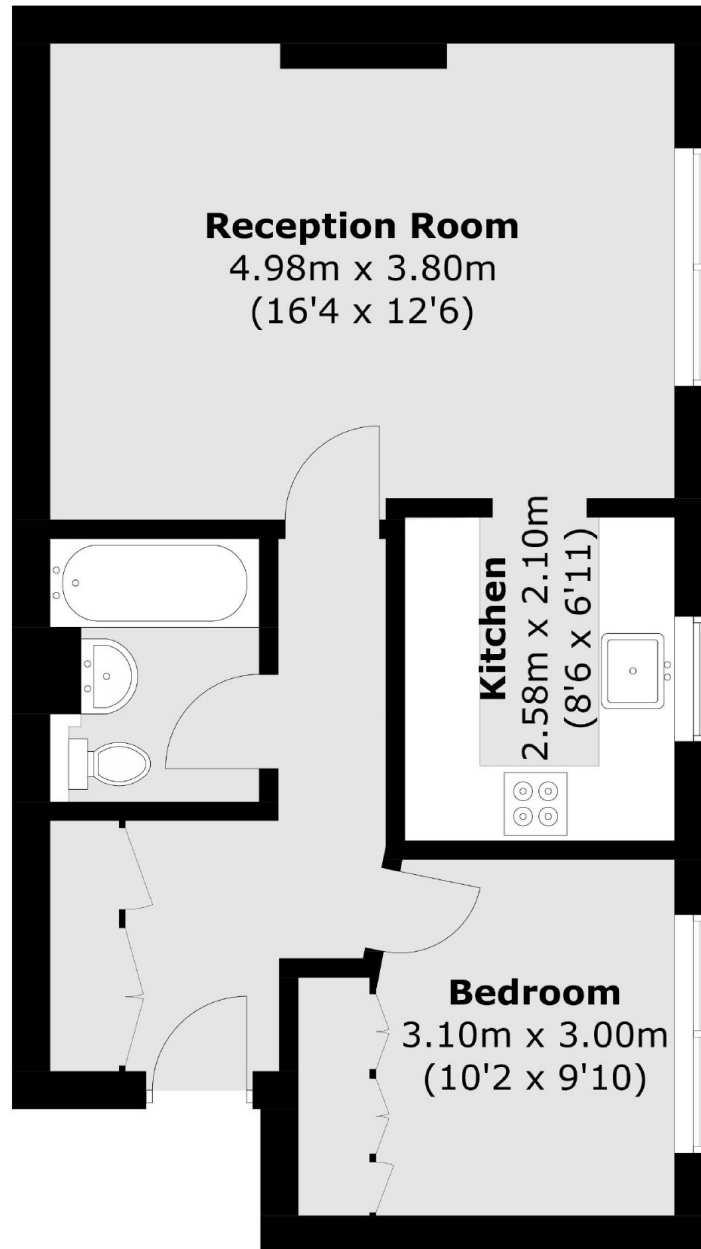
A one bedroom apartment located on the top floor of a period conversion on a quiet residential street minutes from Brick Lane and Shoreditch. The property comprises of an open plan reception room/kitchen, double bedroom and bathroom.

The apartment is well located for the City and is minutes from Brick Lane and Shoreditch. It boasts excellent transport links into the City and Central London. There is an array of social hotspots with plenty of choice for dining and social gatherings.

Features

- One Double Bedroom
- Chain Free
- Top Floor
- Period Conversion
- Moments from Brick Lane

Wood Close, London, E2



Total area (approx.): 44.4 sq. m (477.9 sq. ft)