



Pitfield Street, N1

£550,000

A two double bedroom split level apartment on the top floors of a purpose-built development located in a quiet no-through road for traffic in Hoxton. Arranged over the second and third floor, the property has been recently refurbished and offers plenty of light throughout. Accommodation comprises of a spacious reception room that leads onto a private Juliette balcony with a great view. The kitchen provides ample storage space and both top floor bedrooms have built in storage, as does the family bathroom.

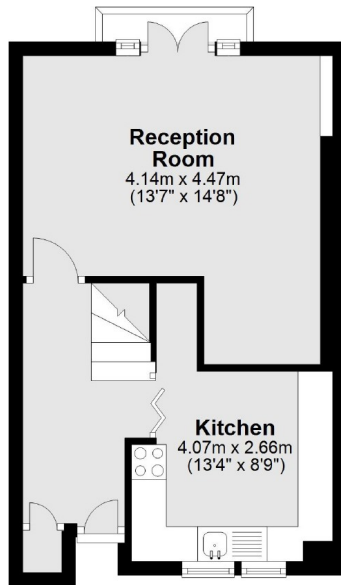
Located on Pitfield Street, the property is close to an array of local amenities with Hoxton Square, Old Street Station, Shoreditch, and the City all easily accessible. There is a vast amount of coffee shops, cafes, restaurants and bars within walking distance.

Features

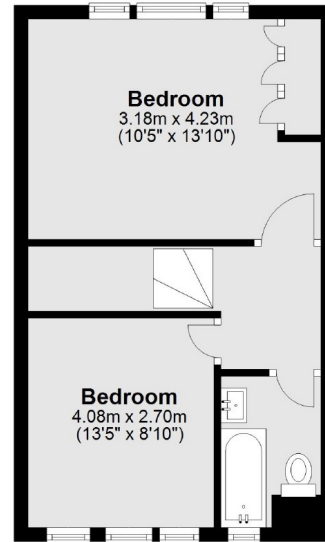
- Two Double Bedrooms
- Split-Level
- Chain Free
- Juliette Balcony
- Close to Old Street Station
- Great Location

Pitfield Street, London, N1

Second Floor



Third Floor



Total area: approx. 63.2 sq. metres (680.1 sq. feet)