



## Orsman Road, N1

£700,000

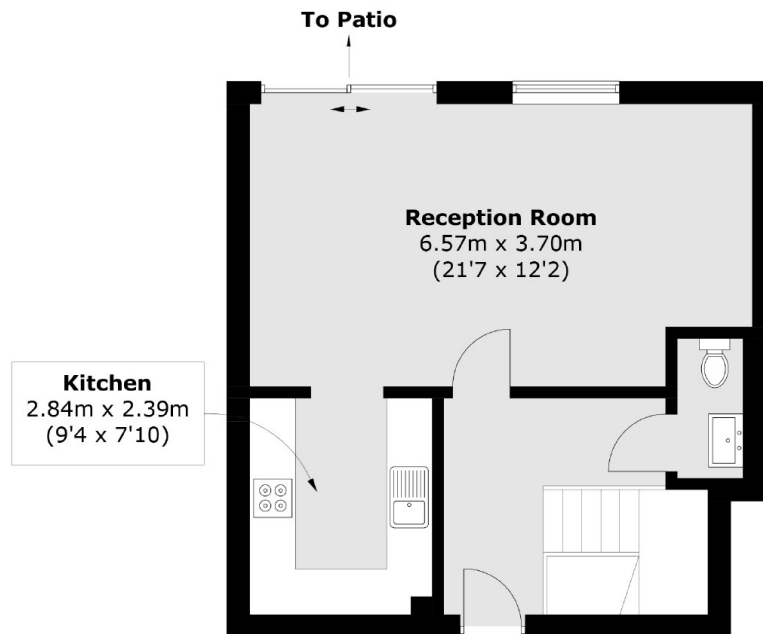
This split level, canal side apartment has two double bedrooms and a private terrace looking onto the canal. The apartment has a semi open plan kitchen/dining and living area, with the bedrooms on the lower ground floor.

Located on Regents Canal, Kleine Wharf is under quarter of a mile from Haggerston Station, giving you overground links across The City. Kingsland Road is on your door step with restaurants and bars running into Shoreditch with Old Street one mile away.

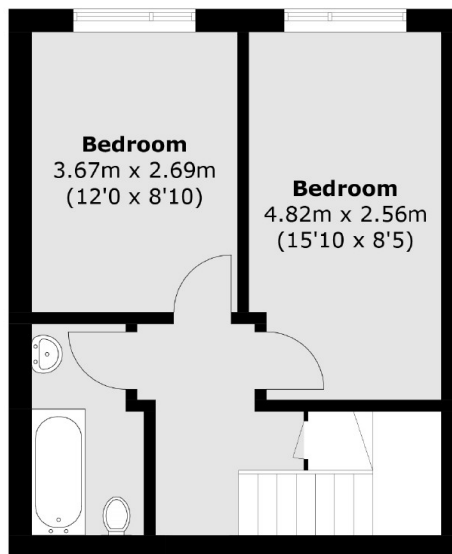
### Features

- Two Double Bedrooms
- Separate WC
- Private Terrace
- Canal Views
- Split Level
- Allocated Parking

# Orsman Road, London, N1



## Ground Floor



## Lower Ground Floor

Total area (approx.): 78.4 sq. m (843.9 sq. ft)