



## Weymouth Terrace, E2

£350,000

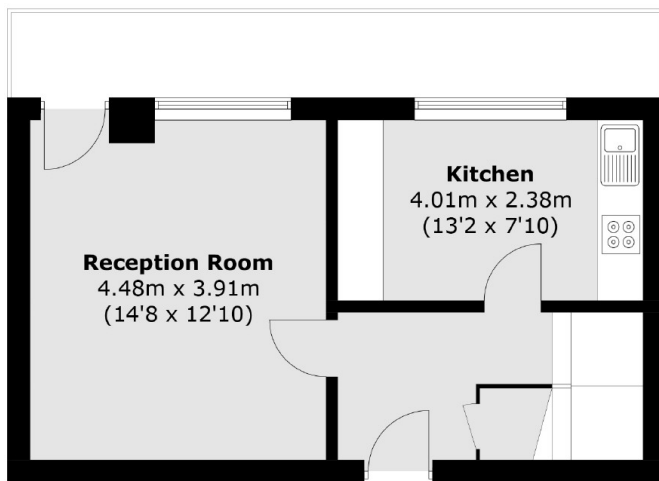
A three bedroom, split level apartment located just off Hackney Road. The modern kitchen/diner features a metro style tile back splash with a reception room to the side. The building has an on site porter and is currently being refurbished.

Weymouth Terrace is just off of Hackney Road with its shop bars and restaurants and is just over a half a mile from Hoxton Square, Columbia Road and Broadway Market. Hoxton station is within a quarter of a mile.

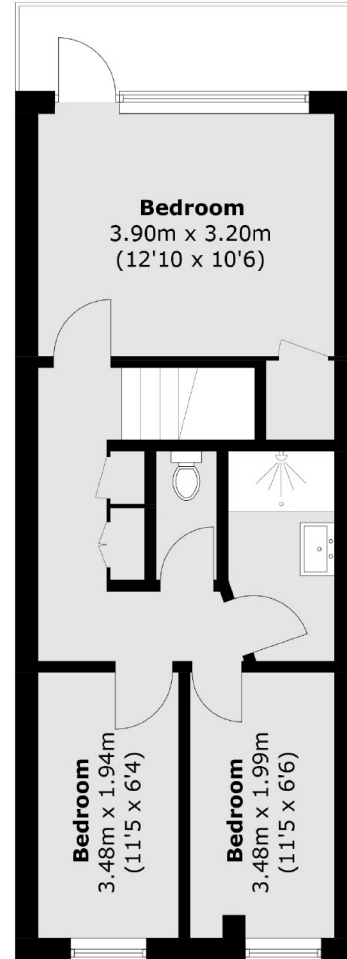
### Features

- Three Bedroom
- Kitchen/Diner
- Modern Bathroom
- Separate WC
- On Site Porter
- No Onward Chain

# Weymouth Terrace, London, E2



**Ninth Floor**



**Tenth Floor**

Total area (approx.): 78.9 sq. m (849.3 sq. ft)