



## Bracklyn Street, N1

£550,000

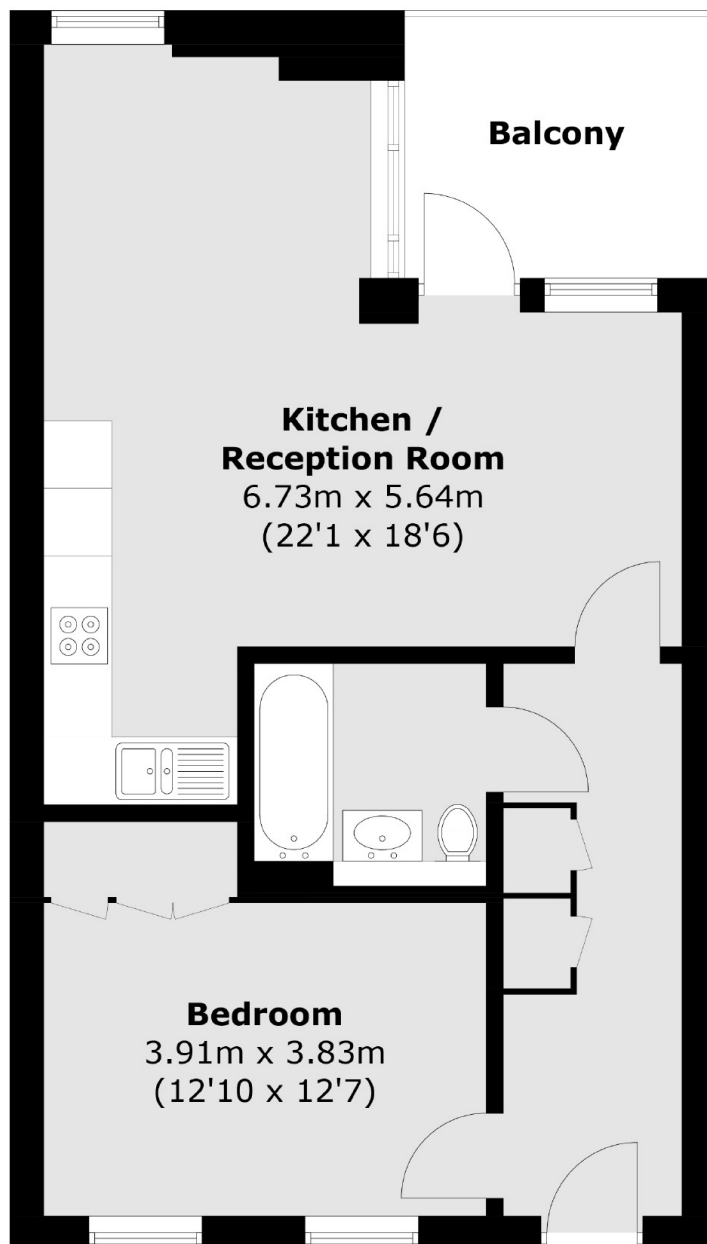
A beautifully presented one double bed apartment situated across from Shoreditch park. This modern home, complete with top of the range fixtures and fittings, has a wide hallway with plenty of built-in storage and an L-shaped kitchen reception room with access to a large covered balcony space.

Bracklyn street is between Old Street and Angel with Shoreditch Park across the road. The nearest station is Old Street station a half mile away with the restaurants, cafés and shops of Angel, Old Street and the Wenlock Basin all under half a mile walk.

### Features

- One Double Bedroom
- Covered Balcony
- Critical Style Windows
- Open Plan
- Modern Development
- No Onward Chain

# Bracklyn Street, London, N1



## First Floor

Total area (approx.): 52.1 sq. m (560.8 sq. ft)  
Balcony: 6.3 sq. m (67.8 sq. ft)