



New Drum Street, E1 £900,000

A new two double bedroom apartment in Wiverton Tower. The property has a large open plan living and kitchen area, two double bedrooms, one en-suite bathroom and the property has a winter garden.

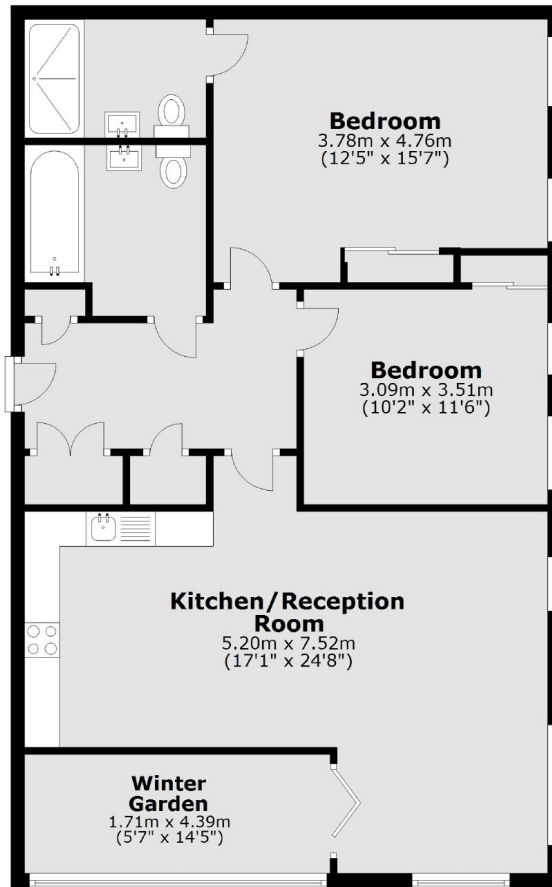
Wiverton Tower is in a prime location, as you are spoilt for choice when it comes to transport links with Aldgate and Tower Hill stations just moments away.

Features

- Two Double Bedrooms
- Two bathroom
- Internal Garden
- Residents Gym
- 24 Hour Concierge
- Close to Liverpool Street

New Drum Street, London, E1

Seventh Floor



Total area: approx. 92.3 sq. metres (994.0 sq. feet)