



Quaker Street, E1

£700,000

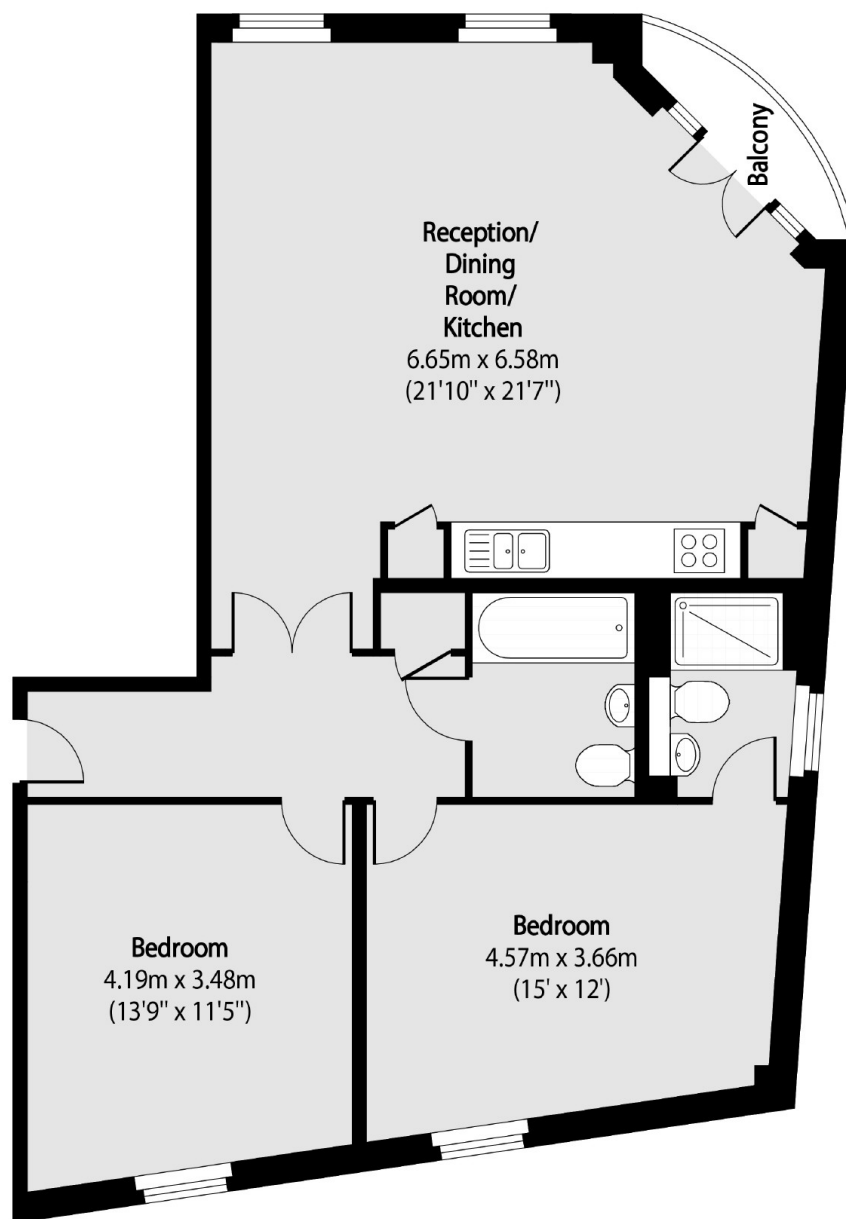
A well presented two double bedroom apartment with two bathrooms located in Spitalfields. The property has an open plan kitchen and living area, wooden flooring throughout, access to a private terrace and secure entry with lift access.

Quaker Street is located round the corner from Shoreditch High Street Station, and half a mile from Liverpool Street, giving you excellent transport links. Brick Lane and Commercial Street are on it's door step giving you restaurants and cocktail bars within a short distance.

Features

- Two Double Bedrooms
- Two Bathrooms
- Close To Transport
- Balcony
- Secure Entry
- Lift Access

Quaker Street, London, E1



Total area (approx): 81.66 sq m (879 sq. ft)

Balcony total area (approx): 1.86 sq m (20 sq. ft)

Dexters

Shoreditch
44 Great Eastern Street
London
EC2A 3EP
Sales
0207 483 6371

Energy Rating: B. We aim to make our particulars both accurate and reliable. However they are not guaranteed; nor do they form part of an offer or contract. If you require clarification on any points then please contact us, especially if you're traveling some distance to view. Please note that appliances and heating systems have not been tested and therefore no warranties can be given as to their good working order.

 **RICS** | Regulated
Estate Agent
and Letting Agent

[dexters.co.uk](https://www.dexters.co.uk)