



## Warwick Lane, EC4M

£975,000

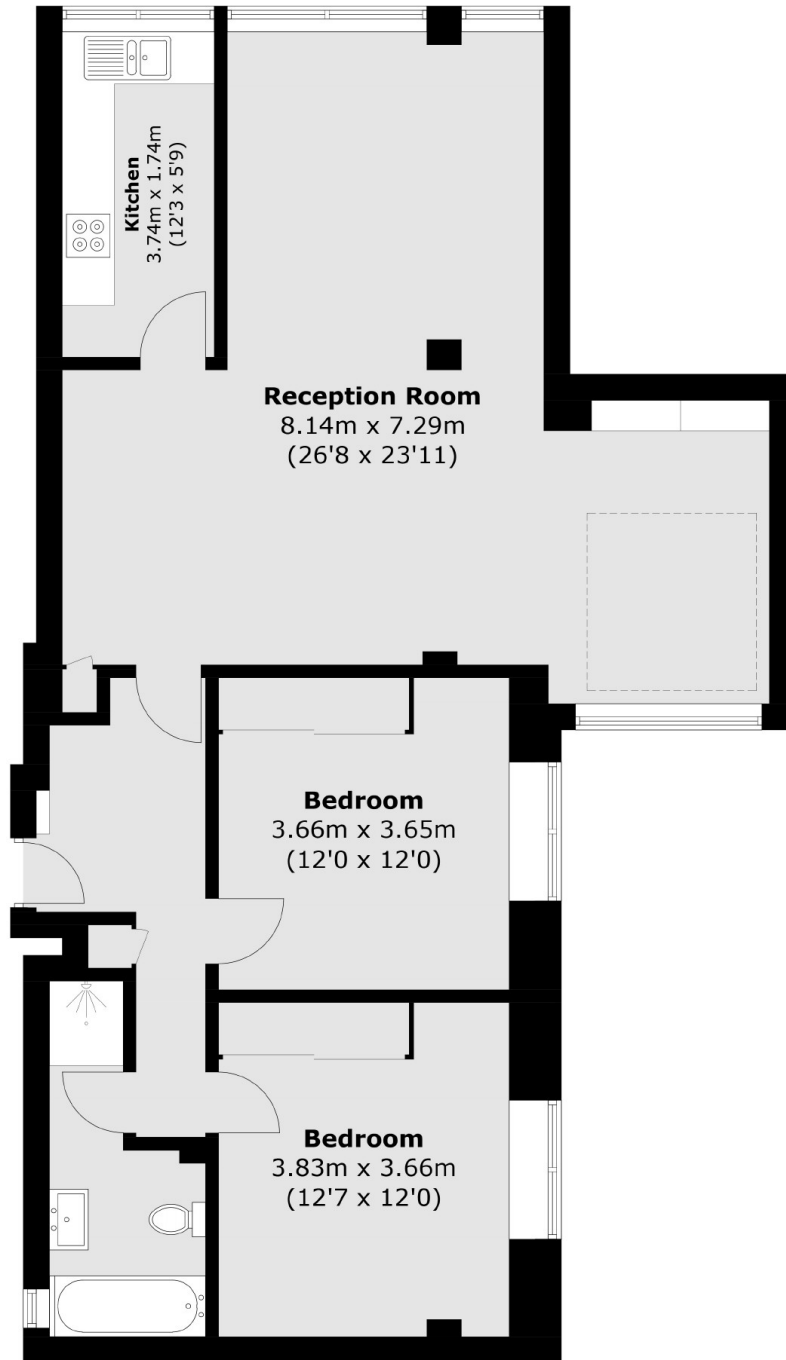
This two double bedroom apartment is located on the first floor of a well-maintained block. This property receives an abundance of natural light, while the large open plan living room is perfect for receiving guests. The apartment comes with an on-site car parking space and a share of the freehold.

The apartment is located less than 200 yards from St Paul's Cathedral, within the heart of London's financial district. St Paul's (Central Line), City Thameslink, Blackfriars (Mainline and District Line) and Farringdon (Elizabeth Line and Metropolitan Line) are all within walking distance. The property is surrounded by bars, cafes and restaurants. Attractions such as the Tate Modern are also just a short walk away on London's South Bank.

### Features

- Two Double Bedrooms
- Open Plan Living
- Share of Freehold - 993 years
- Allocated Parking Space
- On-Site Porter
- St. Paul's nearby

# Warwick Lane, London, EC4M



Total area (approx.): 91.7 sq. m (987.0 sq. ft)