



Mansell Street, E1

£500,000

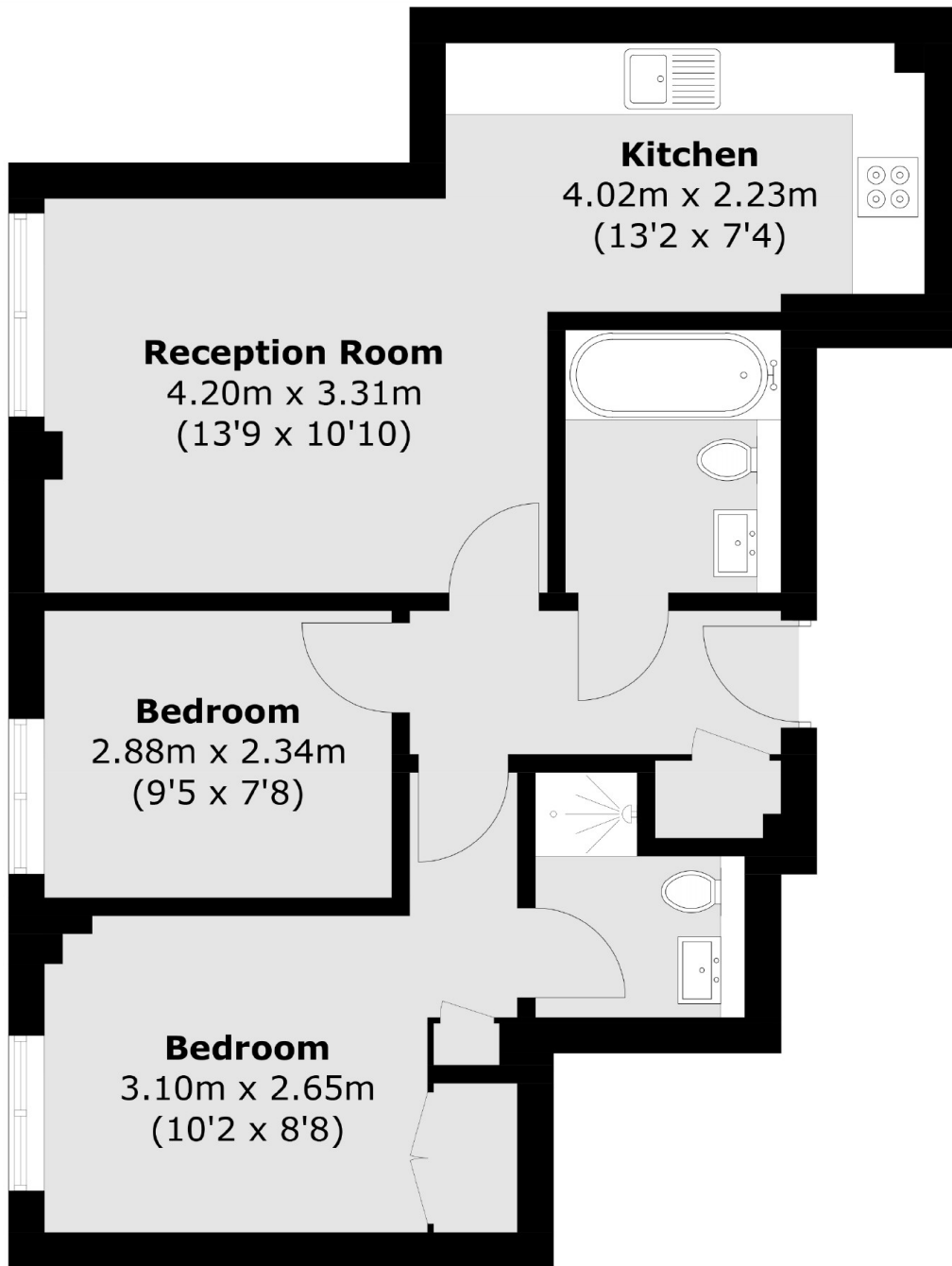
A bright and spacious two double bedroom, two bathroom flat that is based in the popular Tower Hill area. The property has an open plan entertaining space with fully fitted eat in kitchen, along with lift access to the flat.

Mansell Street is .6 of a mile away from St Katharine's Dock where you have some fantastic bars, restaurants and cafés that overlook the marina.

Features

- Two Bedroom
- Two Bathroom
- Furnished
- Concierge
- Good Transport Links
- Underground parking

Mansell Street,
London, E1



Total area (approx.): 55.1 sq. m (593.1 sq. ft)