



## Weymouth Terrace, E2

£600,000

A two double bedroom, two bathroom, Victorian pub conversion off Hackney Road. Laid out over two floors there is a second reception room and sleeping area on the lower ground floor and the property has a contemporary finish throughout.

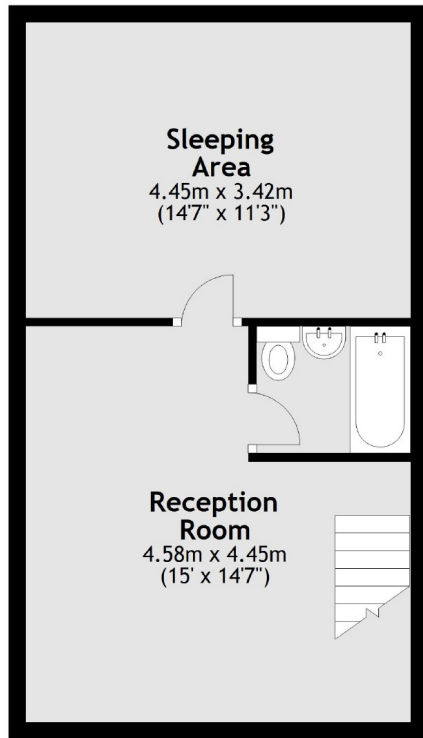
Weymouth Terrace is just off of Hackney Road within 200 meters of Haggerston Park and Regents Canal. Hoxton Overground Station is with a quarter of a mile as well as Columbia Road.

### Features

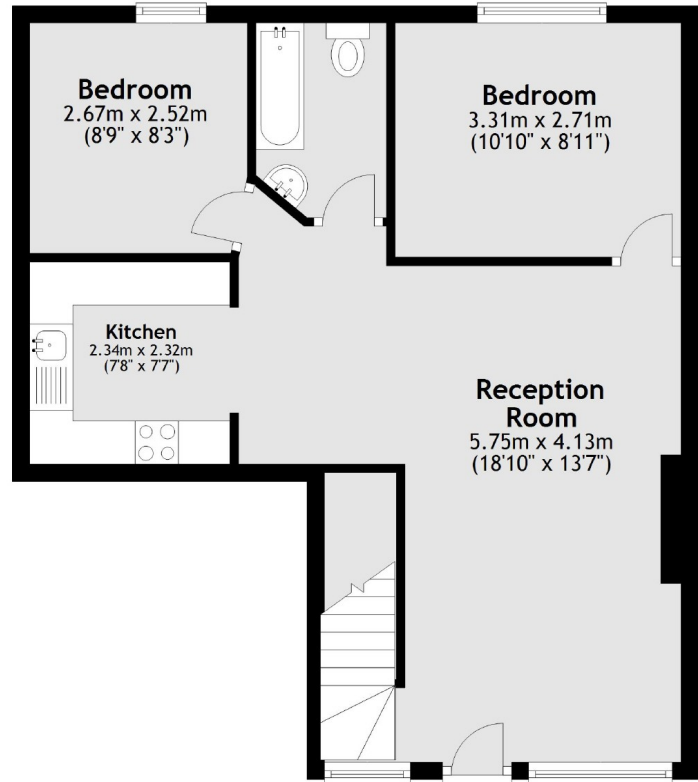
- Two Double Bedrooms
- Two Bathrooms
- Two Reception Rooms
- Share of Freehold
- High Ceilings
- Victorian Pub Conversion

# Weymouth Terrace, London, E2

Lower Ground Floor



Ground Floor



Total area: approx. 88.8 sq. metres (955.9 sq. feet)