



Chart Street, N1

£500,000

A two double bedroom lateral apartment situated on the second floor of a secure development close to Old Street Station. The property comprises of a generous living space with feature fireplace, a modern eat-in kitchen, two double bedrooms and a modern bathroom with a separate WC.

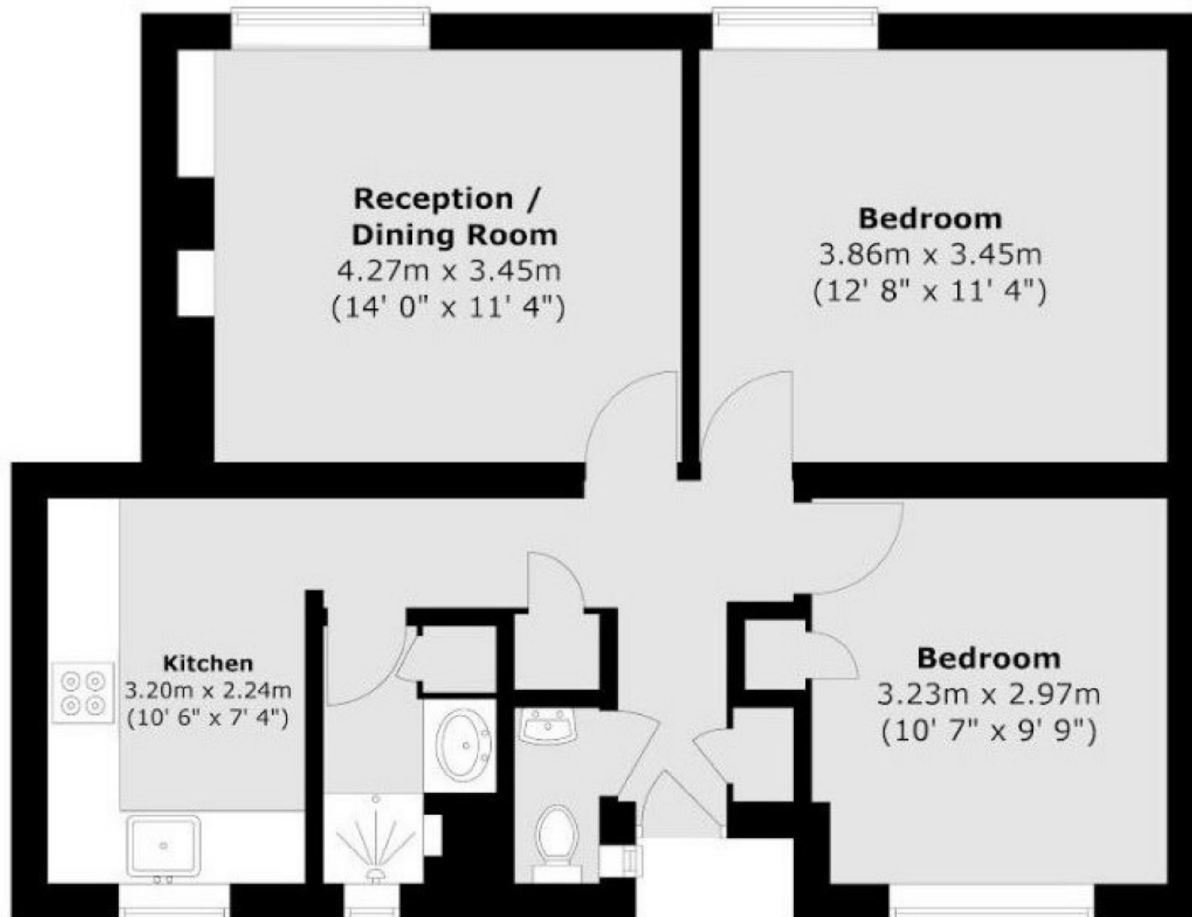
Touchard house is located under quarter of a mile from Old Street Station on the Northern line. You can find Shoreditch under half a mile away and Hoxton street is under a quarter of a mile walk both with their many shops, restaurants and bars.

Features

- Two Double Bedrooms
- Second Floor
- Separate Eat In Kitchen
- Close To Transport Links
- Old Street Station Nearby

Chart Street, London, N1

Second Floor



Total area (approx.) : 60.2 sq. m (648 sq. ft)