



## Candle Street, E1 £500,000

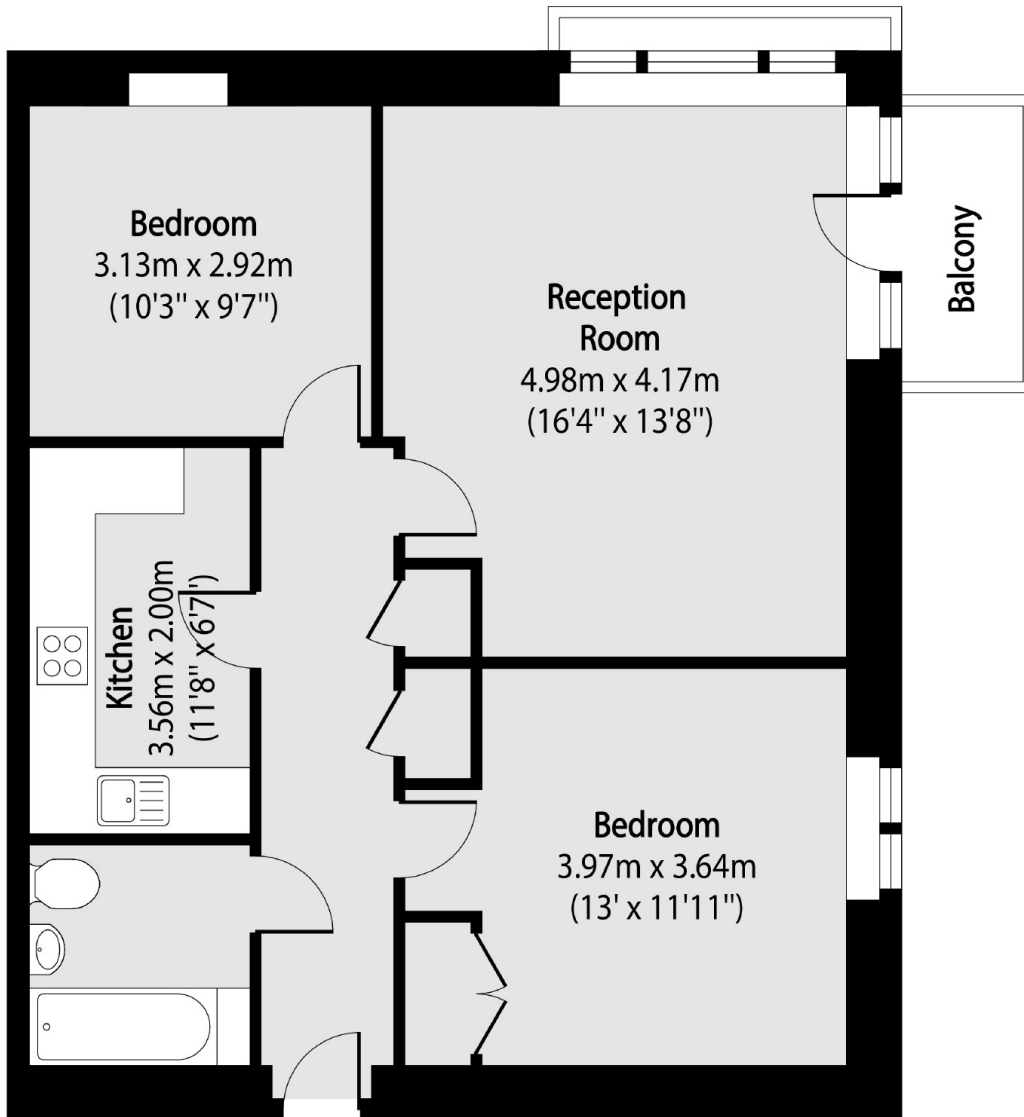
This top floor modern, purpose built, two bedroom apartment offers an excellent, bright, living space that leads onto the private balcony. Comprising two double bedrooms, a family bathroom and a large separate kitchen and off-street parking.

Conveniently situated between the business districts of Canary Wharf and the City with Stepney Green Underground and Limehouse DLR stations nearby. The property also benefits from being just 0.2 miles from Mile End Park.

### Features

- Two Double Bedrooms
- Top Floor
- Dual Aspect
- Off-Street Parking
- Private Balcony
- Double Glazing Windows

Candle Street,  
London, E1



Total area (approx): 64.65 sq m (696 sq. ft)

Balcony total area (approx): 2.75 sq m (30 sq. ft)