



## Lion Mills, E2

£700,000

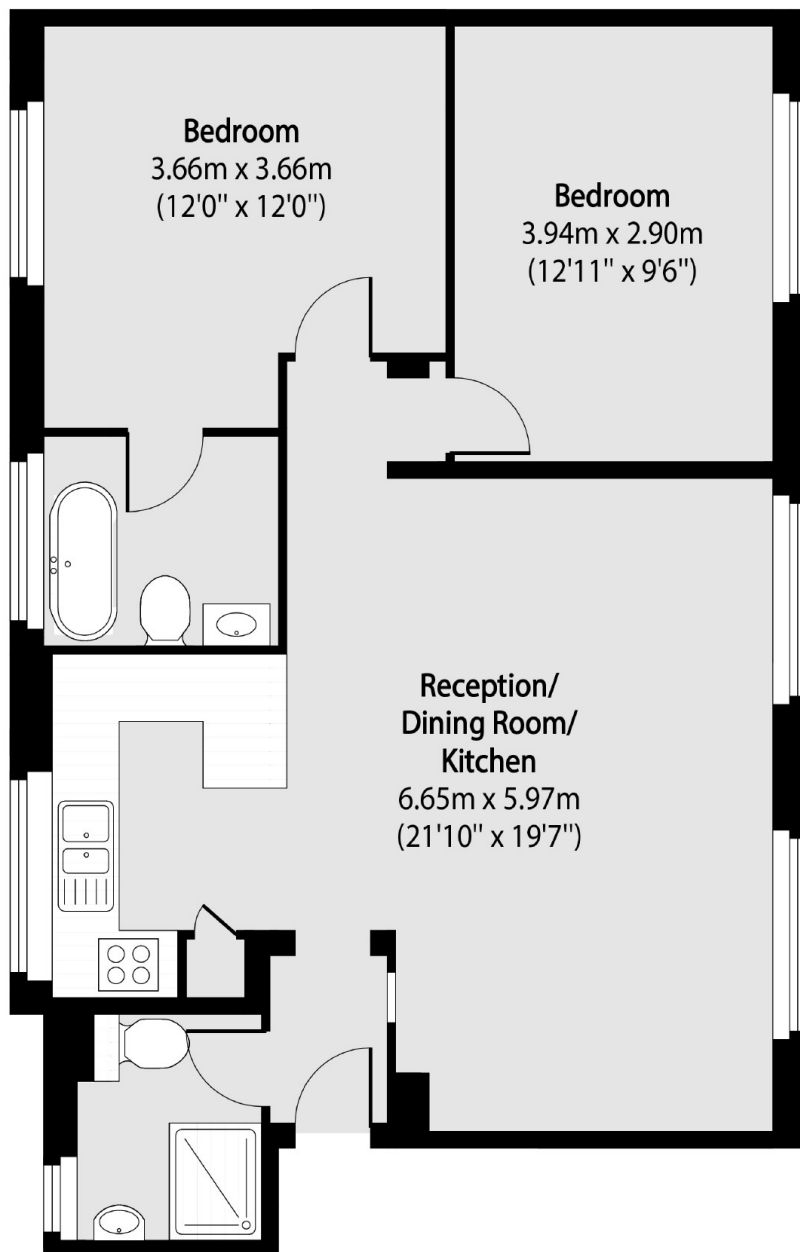
Located within a secure gated Victorian warehouse conversion, this bright and airy two double bedroom apartment. This property has high ceilings throughout, a semi open plan kitchen reception room and two modern bathrooms. The property has been recently refurbished with new windows added, and is set within a large, mature communal garden.

Lion Mills is accessed via Hackney Road with Cambridge Heath overground a quarter of a mile away at the end of the road. Broadway Market and Columbia Road Flower Market are within a half mile of the property.

### Features

- Two Double Bedrooms
- Two Bathrooms
- High Ceilings
- Warehouse Conversion
- Communal Gardens
- Recently Refurbished

# Lion Mills, London, E2



Total area (approx): 67.63 sq m (728 sq. ft)