



Long Street, E2

£825,000

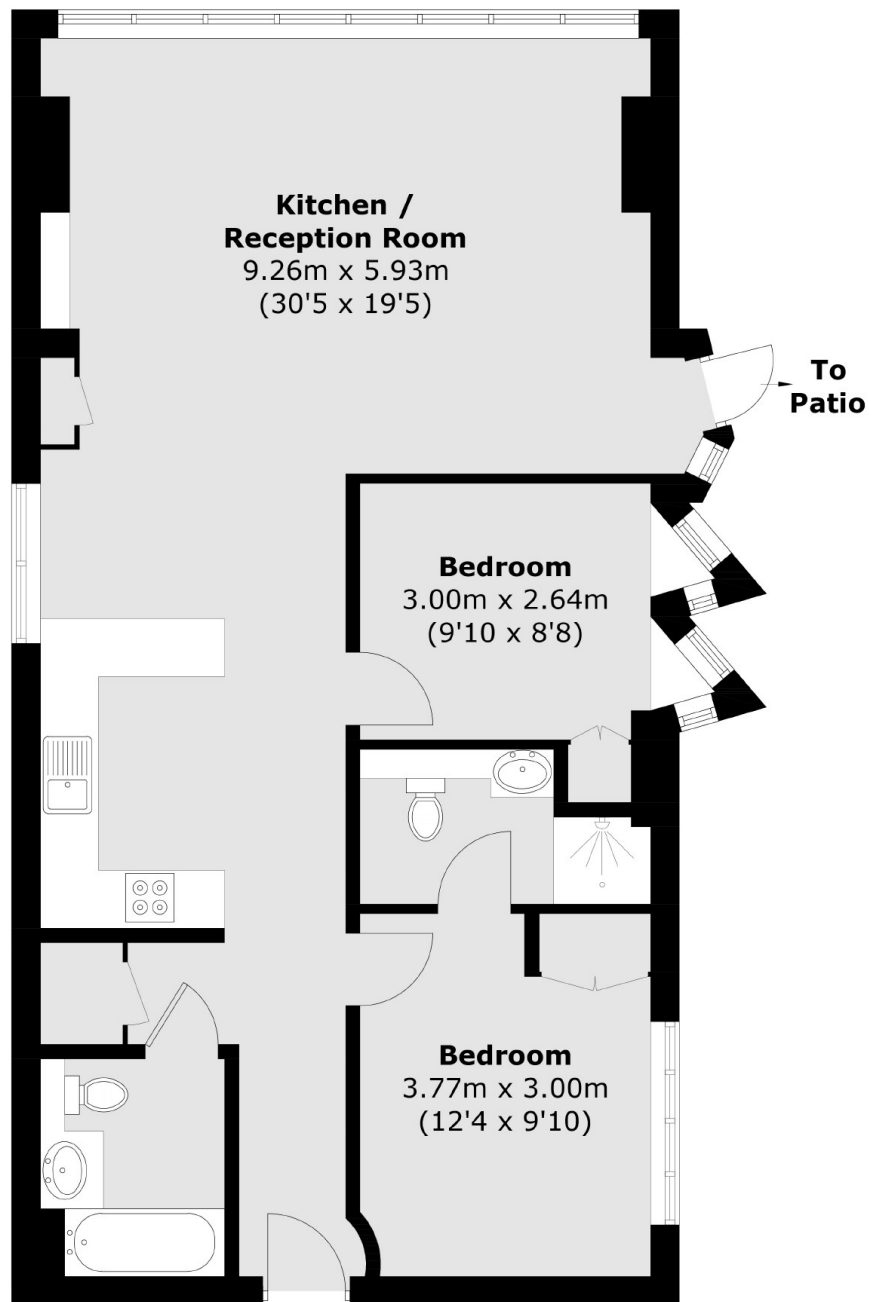
An extremely bright two bedroom apartment with its own private terrace. The property comprises of an open plan reception and kitchen that leads out into a full length terrace. The principal bedroom has ample storage with fitted wardrobes and includes an en-suite shower room. The second bedroom also includes a fitted wardrobe. There is a separate family bathroom and storage cupboard. The property benefits from 24 hour concierge service, fully equipped gym, sauna, steam room, treatment room and cinema room with built in sound system.

You are within walking distance from major transport hubs such as Liverpool Street station, home to Cross rail with direct lines to Heathrow Airport, Central Line, Hammersmith and City and national rail services.

Features

- Two Bedrooms
- 24 Hour Concierge
- Private Terrace
- Cinema Room
- Gym
- Spa

Long Street, London, E2



Total area (approx.): 81.4 sq. m (876.2 sq. ft)