



Alie Street, E1

£725,000

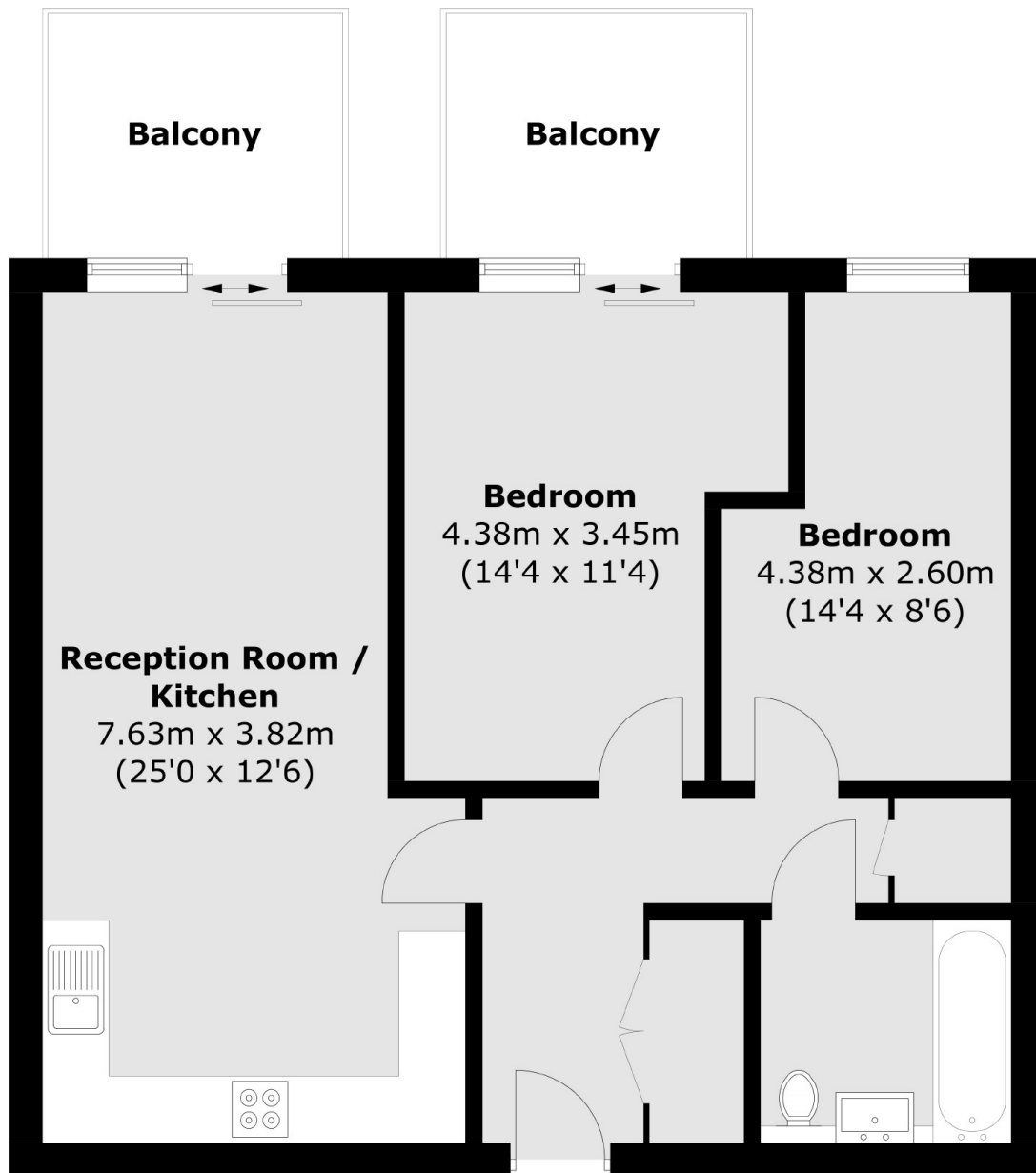
Ceylon House is located within the very popular Goodman's Fields development. This top floor, two bedroom apartment benefits from two South West facing balconies with City skyline views. The well-lit open-plan kitchen is equipped with modern appliances. Additional features include a contemporary bathroom, large hall cupboard and a utility room which offers additional storage.

Goodman's Fields well located for transport links. Within 0.5 of a mile you have Aldgate, Tower Gateway, Tower Hill and Fenchurch Street station. The apartment is conveniently located close to the City, Tower Bridge and St Katharine Docks, featuring an array of restaurants, cafes, and pubs.

Features

Top Floor
Two Balconies
City Skyline Views
Floor to Ceiling Windows
Two Double Bedrooms
720sq.ft

Alie Street, London, E1



Total area (approx.): 66.9 sq. m (720.1 sq. ft)
Balcony area (approx.): 11.8 sq. m (127.0 sq. ft)