



Old Ford Road, E2

£525,000

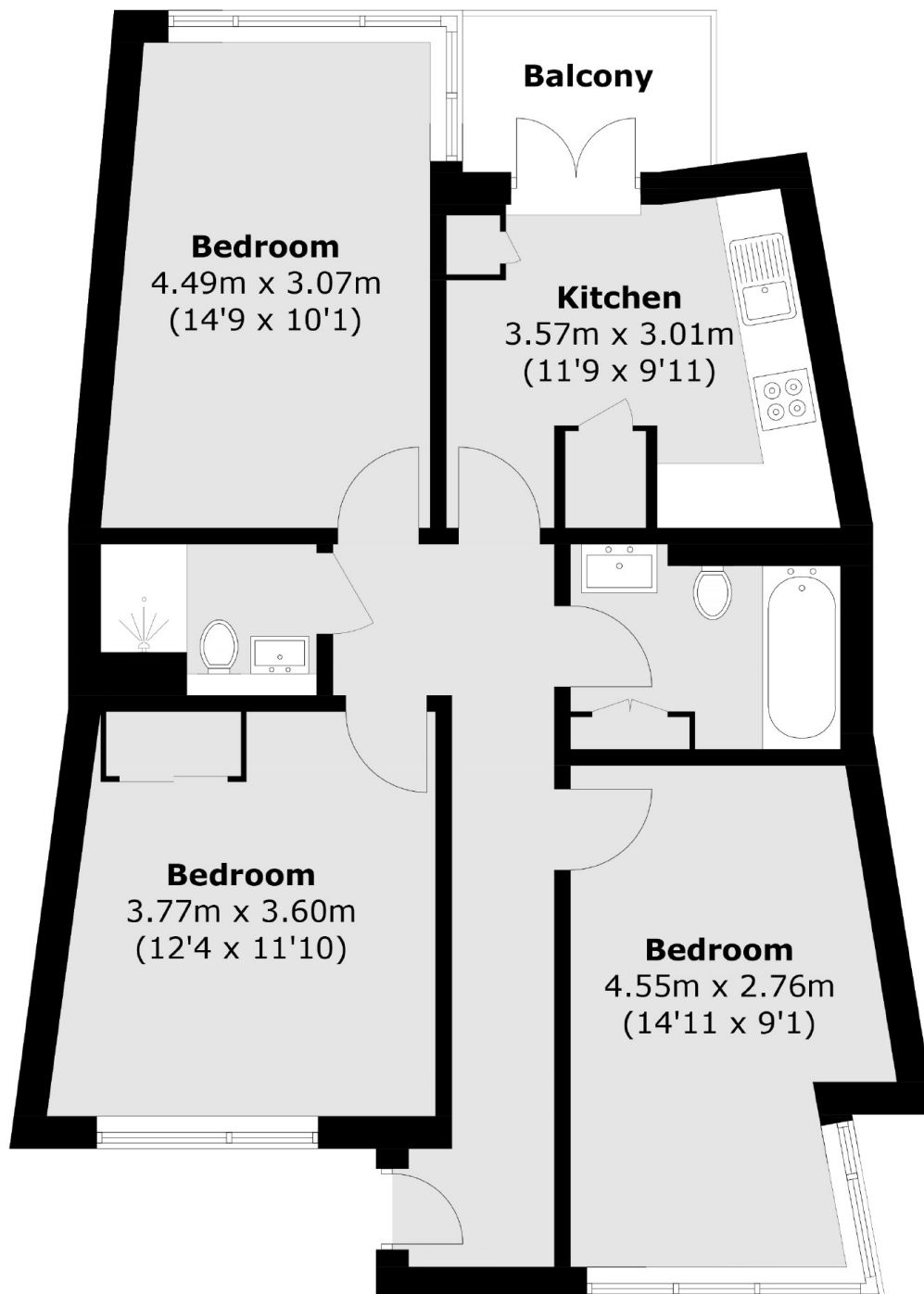
A two double bedroom apartment situated on the first floor and located moments from Victoria Park. This lateral apartment has two double bedrooms, a reception room and separate eat-in kitchen that leads out onto a private balcony,

This apartment sits just over a bridge from Victoria Park and Regents Canal. The local amenities off Roman road and globe town are under a quarter of a mile away and Victoria Park Village is just over half a mile walk.

Features

- Two Double Bedrooms
- First Floor Flat
- Chain Free
- Private Balcony
- Eat In Kitchen
- Close to Victoria Park

Old Ford Road, London, E2



Total area (approx.): 68.3 sq. m (735.2 sq. ft)
Balcony area (approx.): 3.3 sq. m (35.5 sq. ft)