

Cranston Estate, N1

£1,750 Per calendar month

A one bedroom apartment in a secure block opposite Shoreditch Park. This property has a new bathroom fitted, new floors and re-painted throughout. It also has a good sized reception and a separate kitchen.

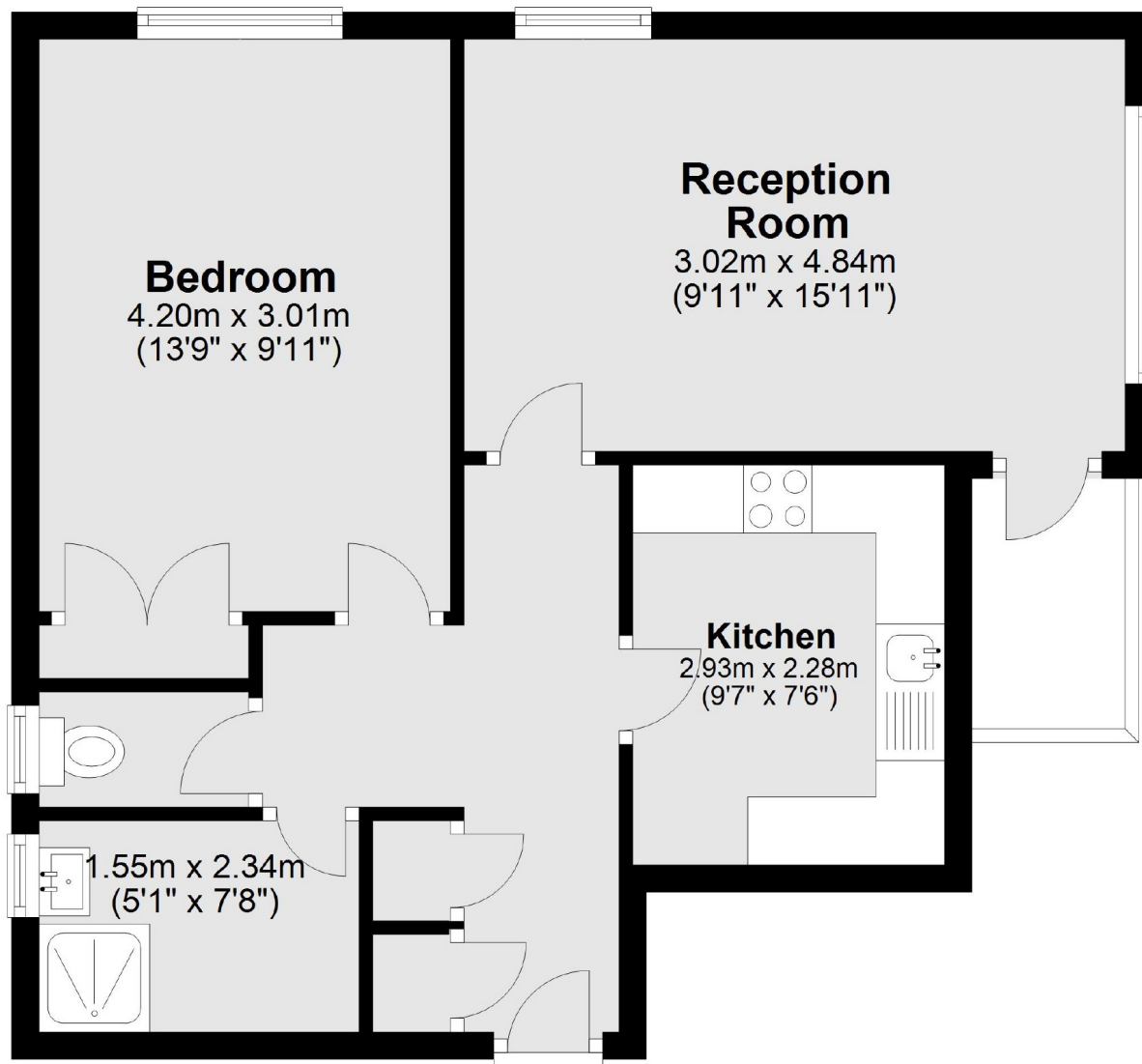
Marshall House is just off of New Road and a half mile away from Old Street station, with the Regents Canal under a third of a mile and next door to Shoreditch Park.

Features

- One Double Bedroom
- New Bathroom
- Secure Block
- Opposite Shoreditch Park
- Great Transport Links
- Great Location

Cranston Estate, London, N1

Ground Floor



Total area: approx. 49.3 sq. metres (531.0 sq. feet)