



## Thoresby Street, N1

£295,000

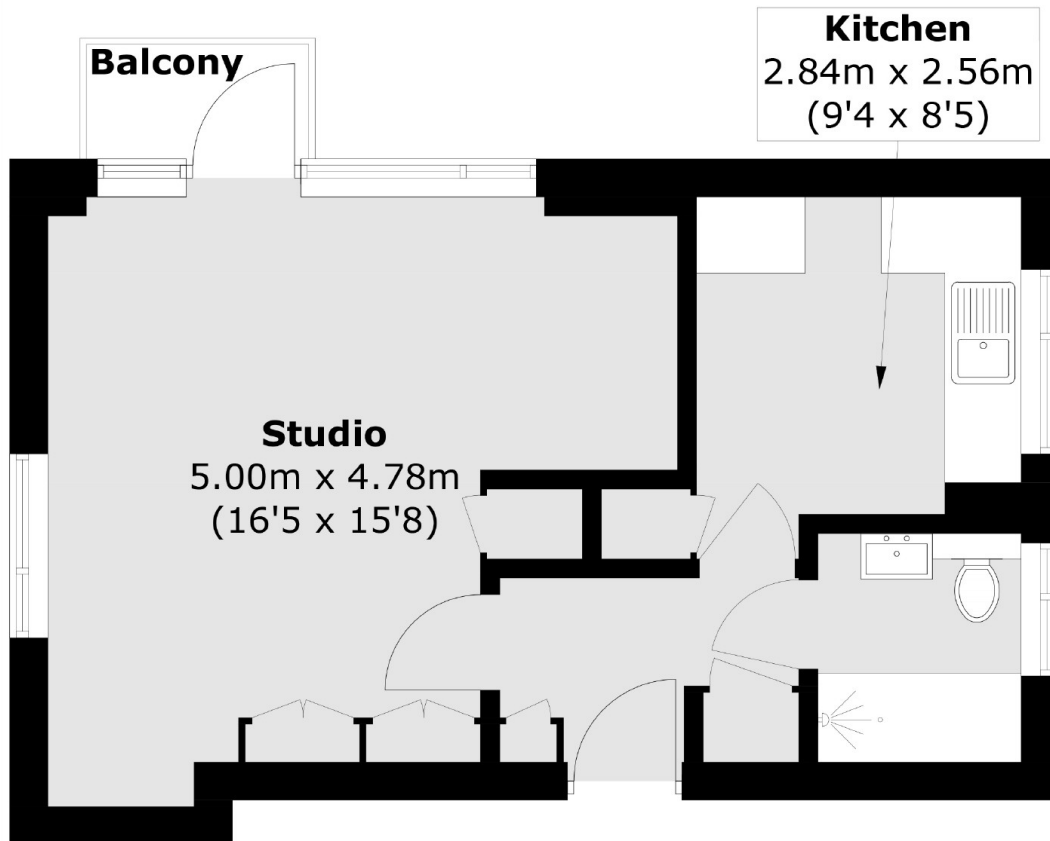
A studio apartment set in a well kept block in Islington. The property would make an ideal first time and it is bright and airy throughout. The flat is accessed via a secure entry and comprises of spacious studio room, bathroom and separate kitchen.

Set just off City road and located moments from Regents canal and Upper Street. The area offers an abundance of transport links, with Old Street underground station and Angel Station close by. There are a variety of bus routes that offer easy access to both the city and the west end. Shoreditch and Angel are both within walking distance offering a multitude of bars restaurants, shops, theatres and galleries.

### Features

OIEO  
Studio Apartment  
Short Walk to Angel  
Recently Refurbished  
Good Transport Links

# Thoresby Street, London, N1



Total area (approx.): 34.7 sq. m (373.5 sq. ft)  
Balcony area (approx.): 1.6 sq. m (17.2 sq. ft)