



Orsman Road, N1

£565,000

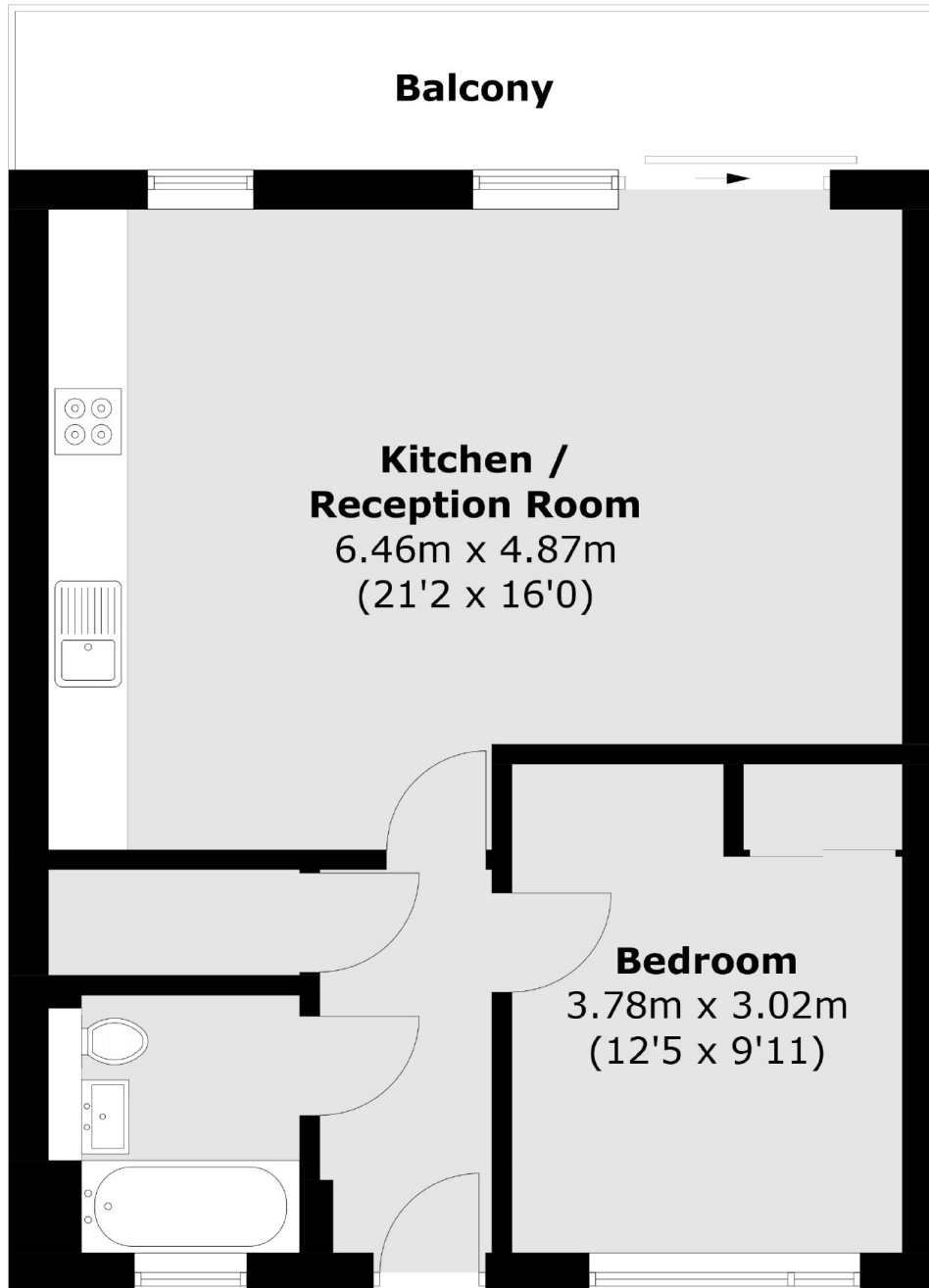
A one bedroom apartment located on the top floor of this canal-side development. The apartment consists of a double bedroom with fitted wardrobes, an open plan kitchen/ reception room that leads out onto a balcony that faces the canal, a family bathroom and ample storage in the hallway

The property is in close proximity to various transport hubs, including Haggerston and Dalston Junction Overground Stations. There are various bus routes along Kingsland Road connecting to the City and the West End. Shoreditch, Hoxton, Dalston, Broadway Market are all in close proximity, and Islington is also easily accessible.

Features

- OIEO
- One Bedroom
- Top Floor
- Canal Facing
- Lift Access
- Close to Local Amenities
- Good Transport Links

Orsman Road, London, N1



Total area (approx.): 51.3 sq. m (552.2 sq. ft)
Balcony area (approx.): 8.3 sq. m (89.3 sq. ft)