

Mint Street, E2

£2,000 Per calendar month

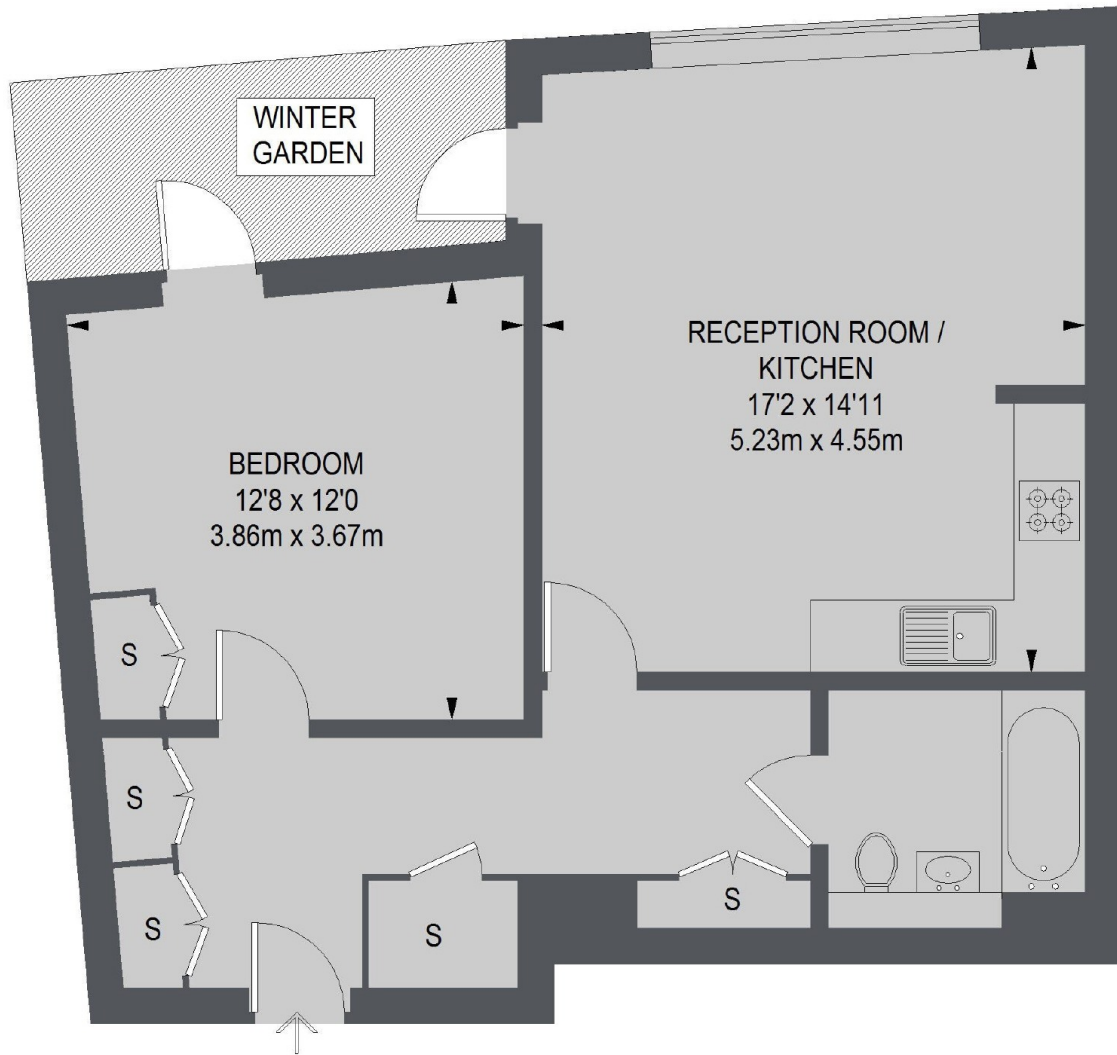
A modern one bedroom apartment located in a secure development. This apartment has a good size open plan reception and kitchen area, main bathroom and large bedroom that leads onto a private winter garden. The apartment is available unfurnished.

This apartment is located a short distance to Bethnal Green station and has a great choice of bars, cafes and restaurants in the area.

Features

- Modern
- Secure Development
- Winter Garden
- Fifth Floor
- Storage
- Great Location

Mint Street,
London, E2



TOTAL APPROX. FLOOR AREA
595 SQ. FT. (55.28 SQ. M.)

Dexters

Shoreditch
44 Great Eastern Street
London
EC2A 3EP

Lettings
0207 483 6372

Energy Rating: B. We aim to make our particulars both accurate and reliable. However they are not guaranteed; nor do they form part of an offer or contract. If you require clarification on any points then please contact us, especially if you're traveling some distance to view. Please note that appliances and heating systems have not been tested and therefore no warranties can be given as to their good working order.

 **RICS** | Regulated
Estate Agent
and Letting Agent

dexters.co.uk