



## Central Street, EC1V

£800,000

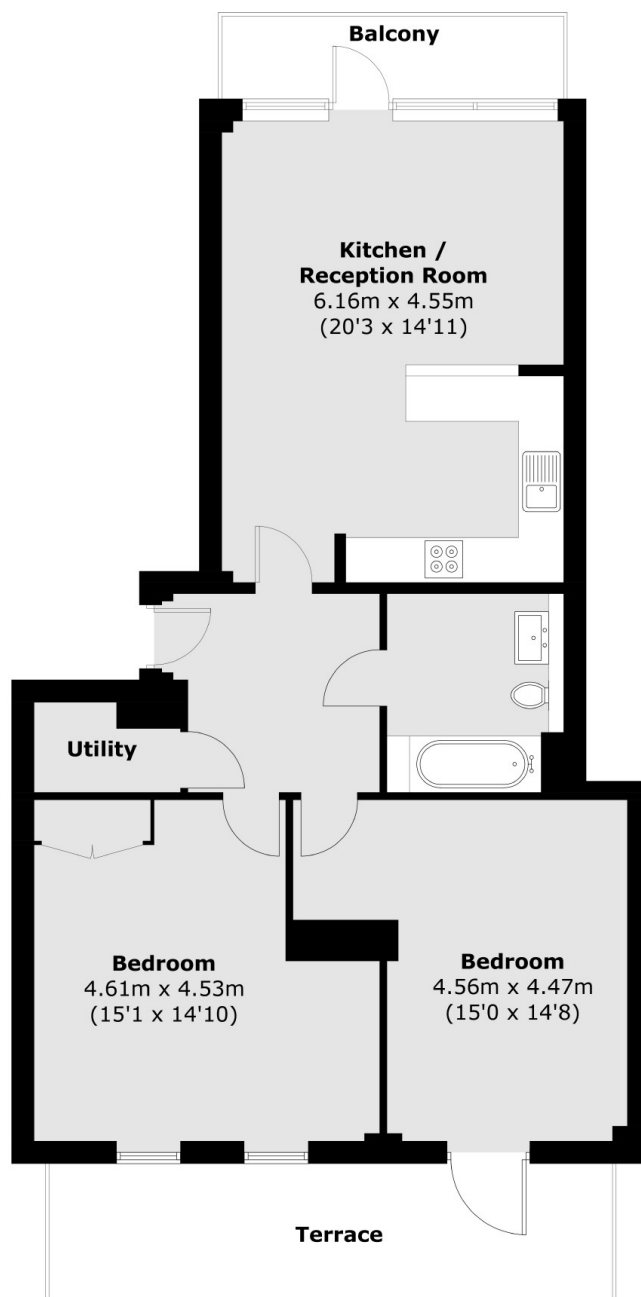
This bright and spacious two bedroom apartment with access to a private balcony and a separate decked terrace is centrally located close to the city. The apartment comprises of two double bedrooms, with one bedroom leading out to the terrace, family bathroom and open-plan kitchen/reception room that leads onto a private balcony.

Worcester Point is located on Central Street and is optimally located for the City and the vast array of local amenities. It is well connected by major transport links including Old Street, Barbican and Farringdon Stations.

### Features

- Two Bedroom
- Private Outside Spaces
- Communal Gardens
- Lift Access
- Secured Entrance
- Modern Interior

# Central Street, London, EC1V



Total area (approx.): 82.2 sq. m (884.8 sq. ft)  
Terrace (approx.): 18.5 sq. m (199.1 sq. ft)