



Great Eastern Street, EC2A

£2,050 Per calendar month

A newly renovated second floor apartment located in the heart of Shoreditch. This studio apartment has been renovated with a partition wall part separating the large open reception. There is a separate new kitchen as well as a main bathroom. The apartment is just under 900 Sq ft and is available unfurnished.

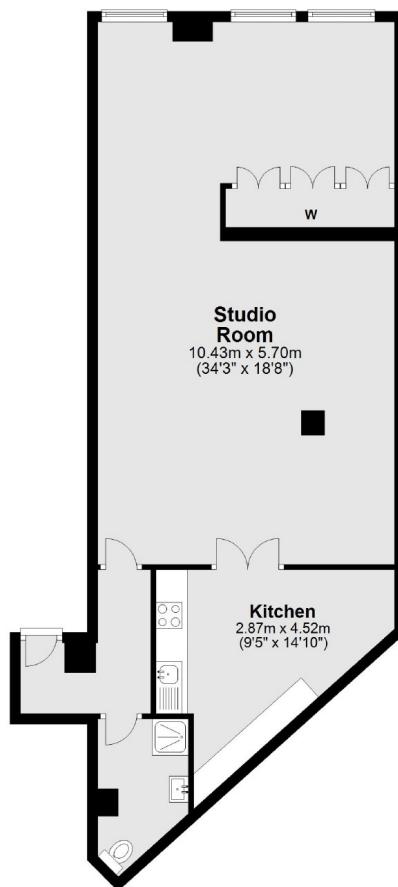
The property is located in the heart of Shoreditch which offers a great choice of bars, cafes and restaurants as well as being a short distance to Old Street, Liverpool St and Shoreditch High St stations.

Features

Newly renovated
Second Floor
Unfurnished
882 Sq ft
Heart of Shoreditch
Separate Kitchen

Great Eastern Street,
London, EC2A

Second Floor



Total area: approx. 83.0 sq. metres (893.0 sq. feet)