



Mile End Road, E1

£850,000

A three double bedroom, two bathroom penthouse in a secure, private, gated development off of Mile End Road. It has two full width balconies, lift and occupies the whole of the top floor.

Oasis Court is located in communal, private gardens, there is Sainsbury's superstore by the entrance to the development and its only a quarter of a mile from both Stepney & Whitechapel Underground stations with the District, Hammersmith and City, Elizabeth line and overground.

Features

- Share of Freehold
- Penthouse
- Three Double Bedrooms
- Two Bathrooms
- Two Large Balconies
- Lift Serviced
- Communal Gardens



Mile End Road, E1

There is a large open plan reception room open plan to the kitchen, it has two sets of double doors out to the full width balcony, a white high gloss, u-shaped kitchen with granite work tops and glass splash back.

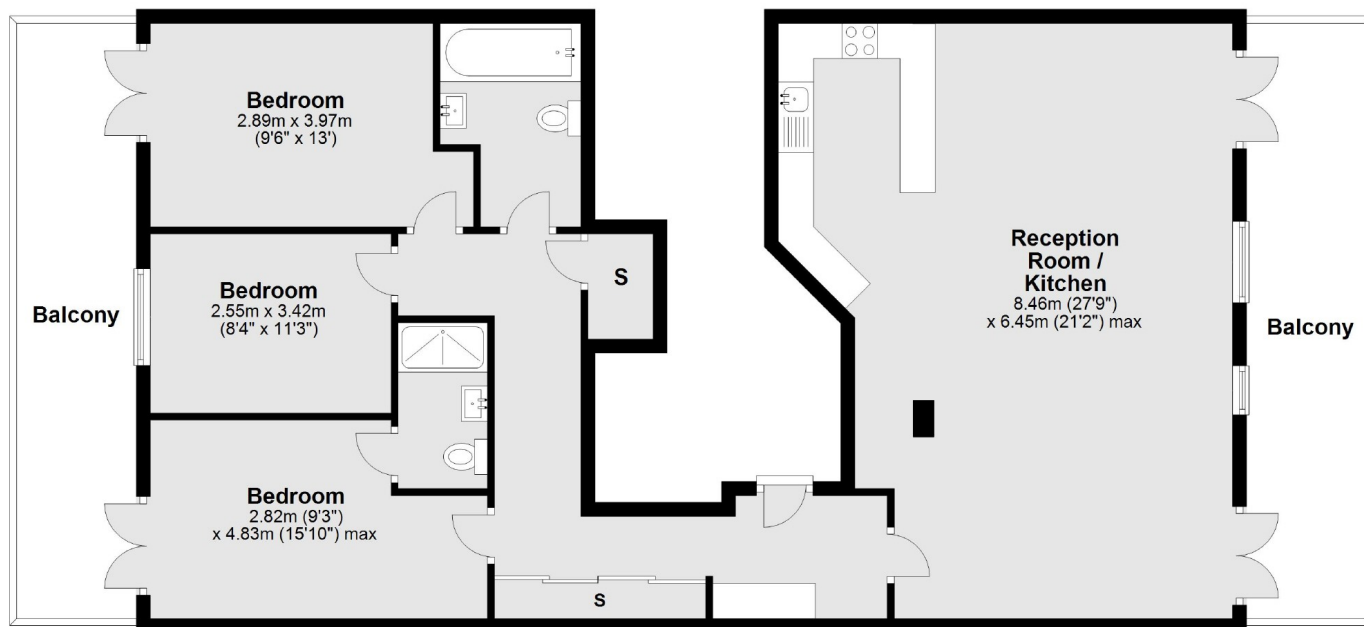
There are three double bedrooms and two bathrooms on the other side of the apartment, connected by a wide central corridor. The principle and second bedroom having direct access to the other full width balcony, while the principle bedroom has an en suite.

Neutrally decorated throughout the apartment is in very good condition with underfloor heating, engineered wood floors and ceiling mounted Sonos throughout.



Mile End Road, London, E1

Third Floor



Main area: Approx. 108.7 sq. metres (1170.4 sq. feet)
Plus balconies, approx. 30.4 sq. metres (327.6 sq. feet)