



Buckfast Street, E2

£500,000

A two bedroom, two bathroom garden apartment set within a small gated development. Comprising a master bedroom with en-suite bathroom, generous second bedroom, family bathroom, storage cupboard in the hallway and a semi-open plan kitchen and living space that opens to a private patio garden. The property benefits from having an allocated parking space.

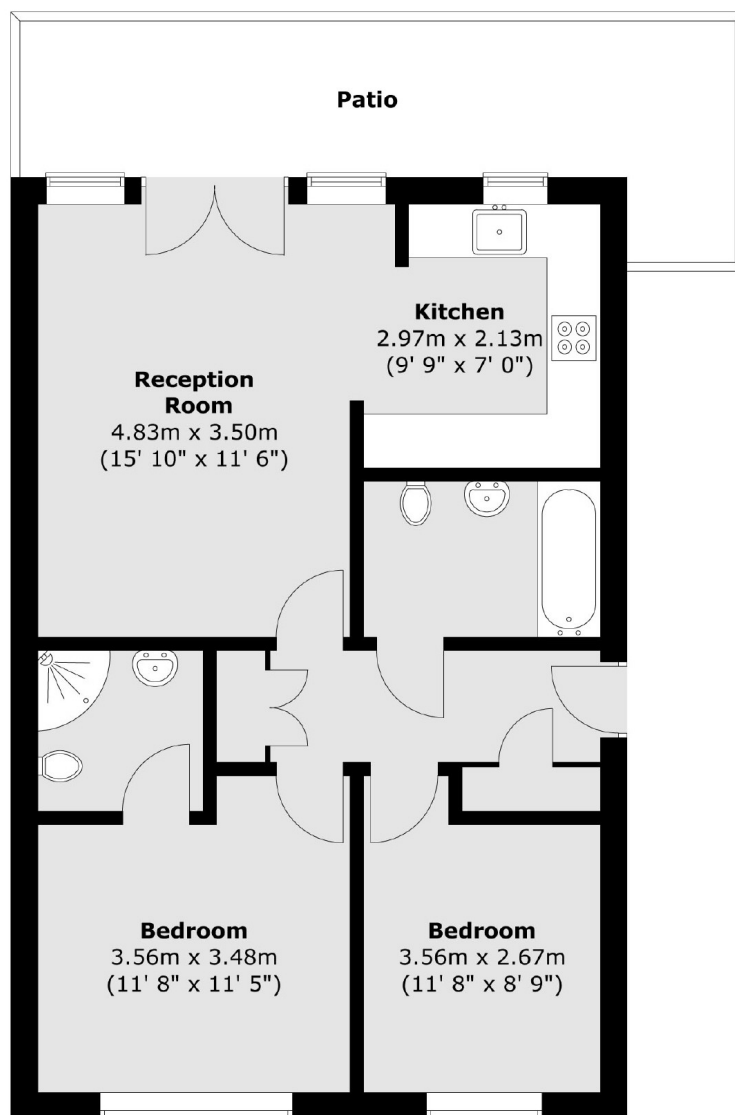
The apartment is set off the Bethnal Green Road within easy reach of Bethnal Green tube station (Central Line) and Shoreditch High Street (Overground). The local hot spots of Brick Lane, Columbia Road, Broadway Shoreditch and Hoxton are all within walking distance.

Features

- Two Bedroom Flat
- Private Patio Garden
- Gated Development
- Parking
- Great Location Bethnal Green Station Nearby

Buckfast Street, London, E2

Ground Floor



Total area (approx.) : 63.2 sq. m (680 sq. ft)
Total patio area (approx.) : 13.4 sq. m (144 sq. ft)