



## Charles Square Estate, N1 £500,000

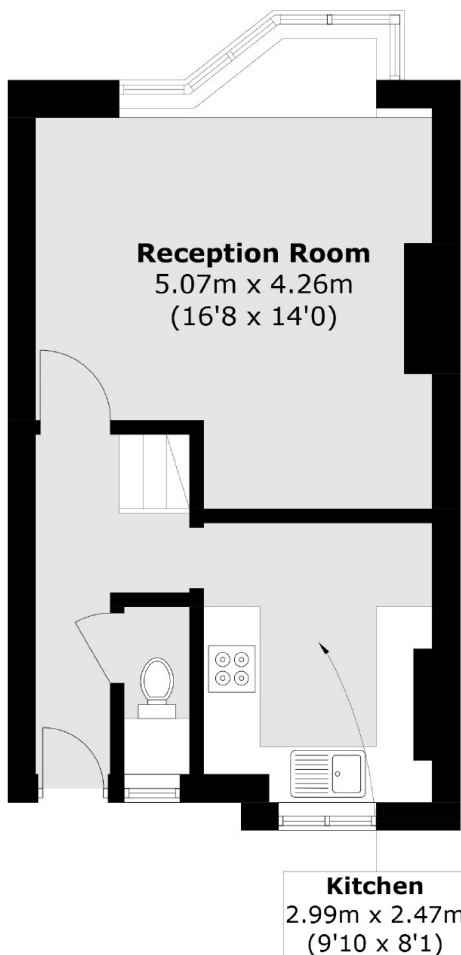
A two bedroom split level maisonette situated on the ground and first floor of a secure gated low-rise development. The property comprises of a large reception room, separate kitchen, two double bedrooms, a bathroom with separate w/c and ample storage throughout.

Excellent location for public transport, Old Street Station (National Rail and Northern line) is less than 5 minutes walk away with several major bus routes serving nearby Old Street and City Road.

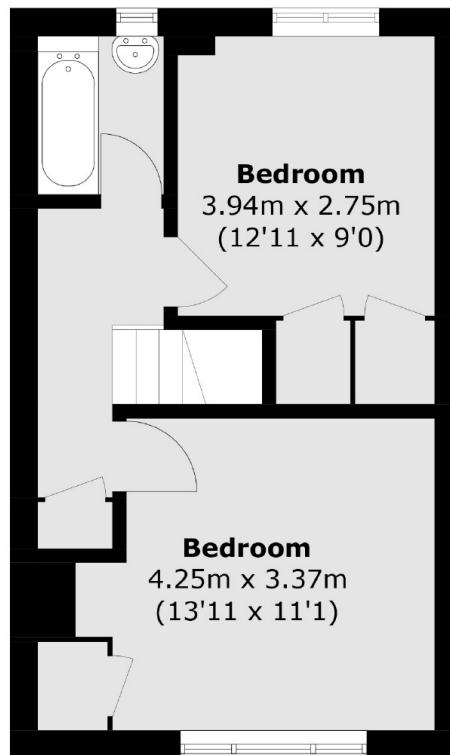
### Features

- Two Bedroom Split Level
- Bright Reception Room
- Separate Kitchen
- Bathroom with Separate W/C
- Great Location
- Short Walk to Old Street Station

# Charles Square Estate, London, N1



**Ground Floor**



**First Floor**

Total area (approx.): 63.6 sq. m ( 684.5 sq. ft)