

Durward Street, E1

£499,000

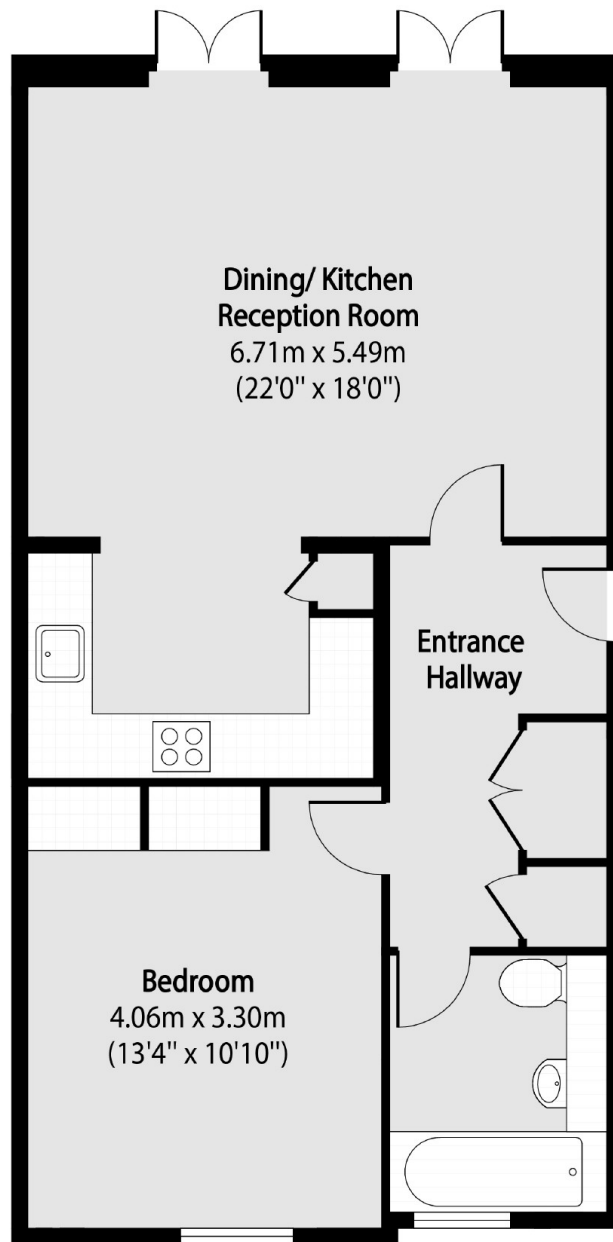
A beautifully presented, one double bedroom garden flat in Durward Street. Reconfigured to include a large neutral u-shaped kitchen with quartz composite worktops. Wide plank oak flooring throughout. The living room has two sets of double doors leading to a private south facing garden.

Kempton Court is a secure, gated development, on a no through road behind the new Whitechapel station & crossrail hub. Incredibly well located with supermarkets, local shops, bars and restaurants around the corner. Spitalfields Market is a short stroll. Shoreditch, The City and Canary Wharf are within a mile.

Features

- One Double Bedroom
- Garden Flat
- South Facing
- Share of Freehold
- Open Plan
- Gated Development

Durward Street, London, E1



Total area (approx): 59.36 sq m (641 sq. ft)