



## Gibraltar Walk, E2

£1,000,000

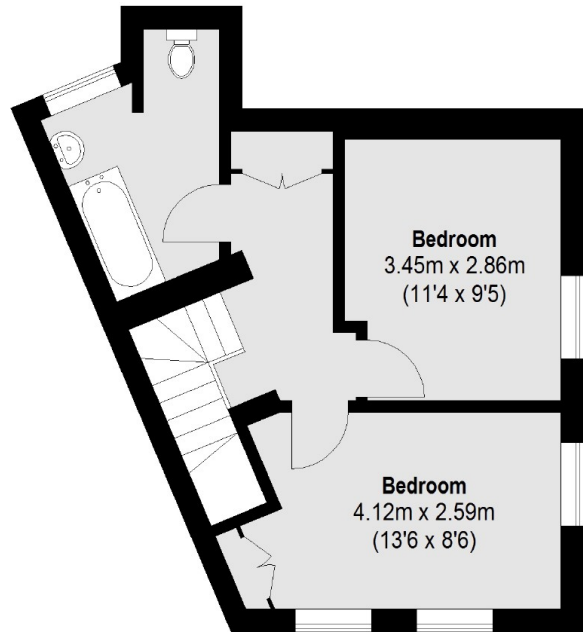
A former church at the entrance to Gibraltar Walk; This beautiful Victorian building is currently laid out over three floors with three double bedrooms, two bathrooms, an open plan kitchen reception room and private garden or parking.

Located around the corner from Brick Lane and with a quarter of a mile of Box Park and Shoreditch Overground Station, Gibraltar Walk is in the heart of Shoreditch and its boutique shops, restaurants and bars.

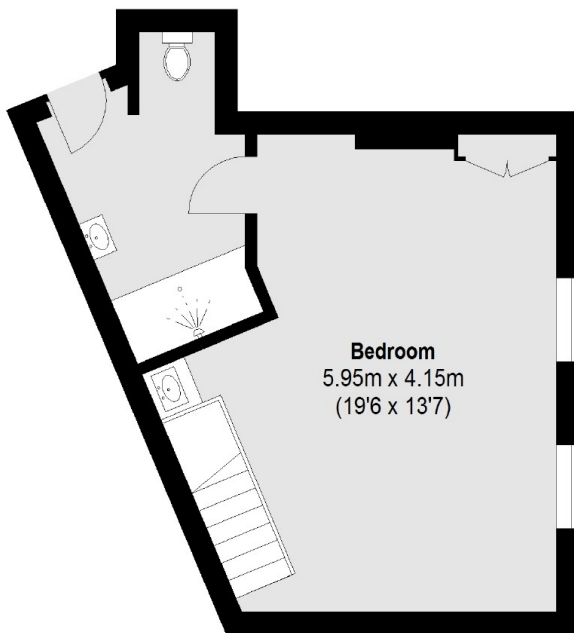
### Features

- Three Double Bedrooms
- Two Bathrooms
- Garden
- Victorian Church Conversion
- Off Street Parking
- No Onward Chain

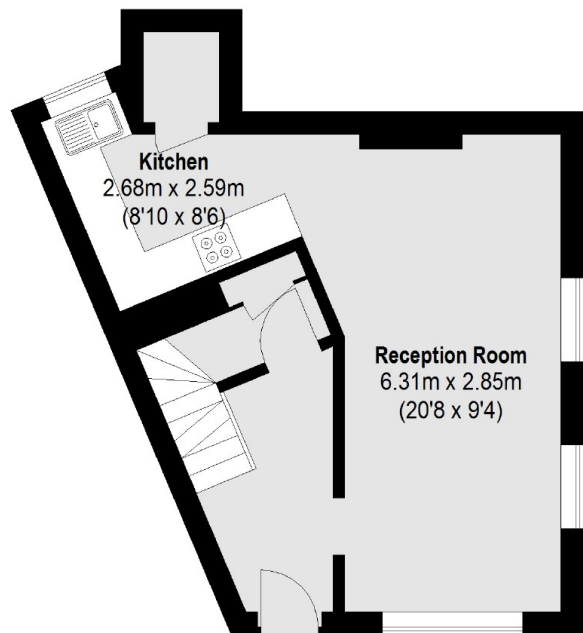
# Gibraltar Walk, London, E2



First Floor



Lower Ground Floor



Ground Floor

Total area (approx.): 109.54 sq. m (1179 sq. ft)