



East Road, N1 £725,000

A two bedroom apartment with two bathrooms and a private balcony located in a secure gated development. The apartment has a large open plan reception with kitchen, two double bedrooms, two bathrooms (one en-suite) and a private balcony.

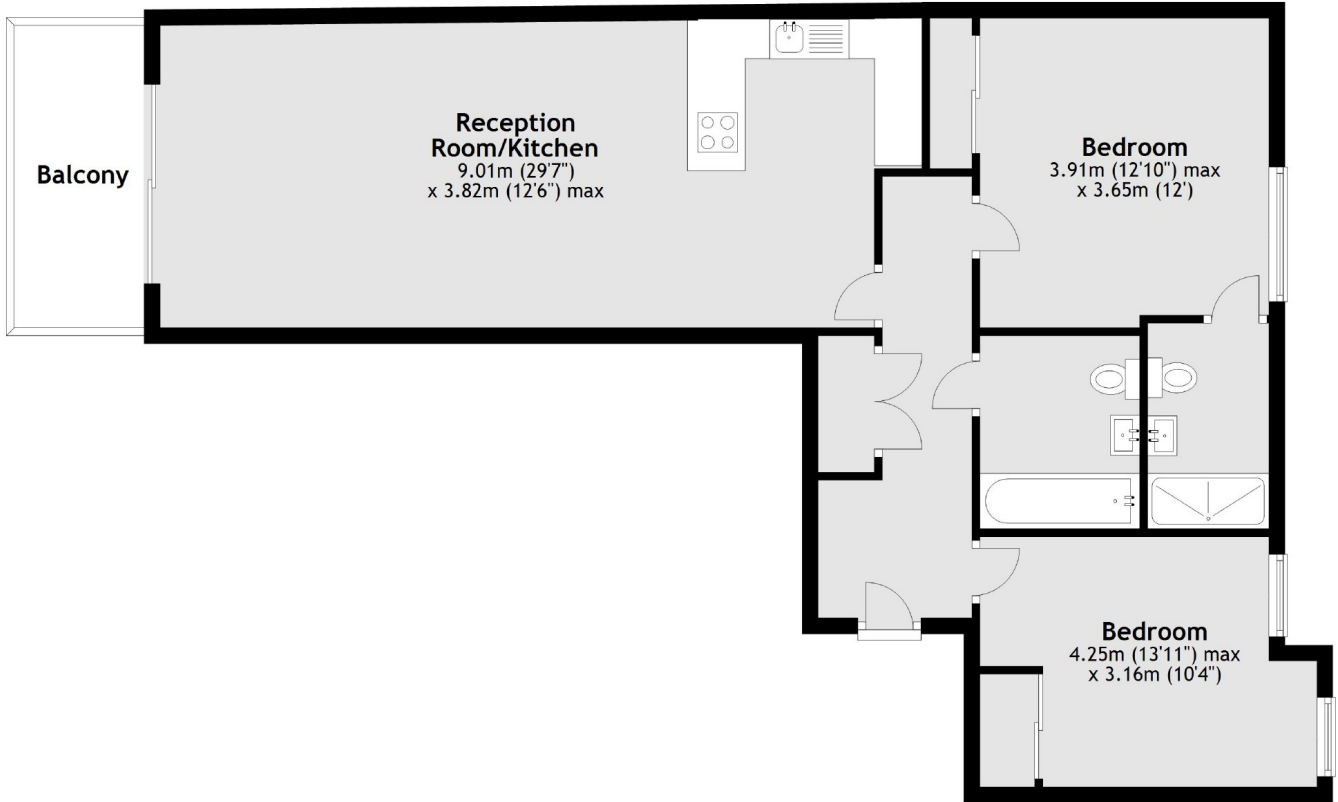
Spectrum Buildings is located a short distance to Old Street station as well as Shoreditch for an array of bars, restaurants and cafes in the area.

Features

- Two Double Bedrooms
- Two Bathrooms
- Modern Finish
- Private Balcony
- Great Location
- Old Street Station Nearby

East Road,
London, N1

Second Floor



Main area: Approx. 83.8 sq. metres (902.3 sq. feet)
Plus balconies, approx. 6.3 sq. metres (67.3 sq. feet)