



Victoria Park Square, E2 £500,000

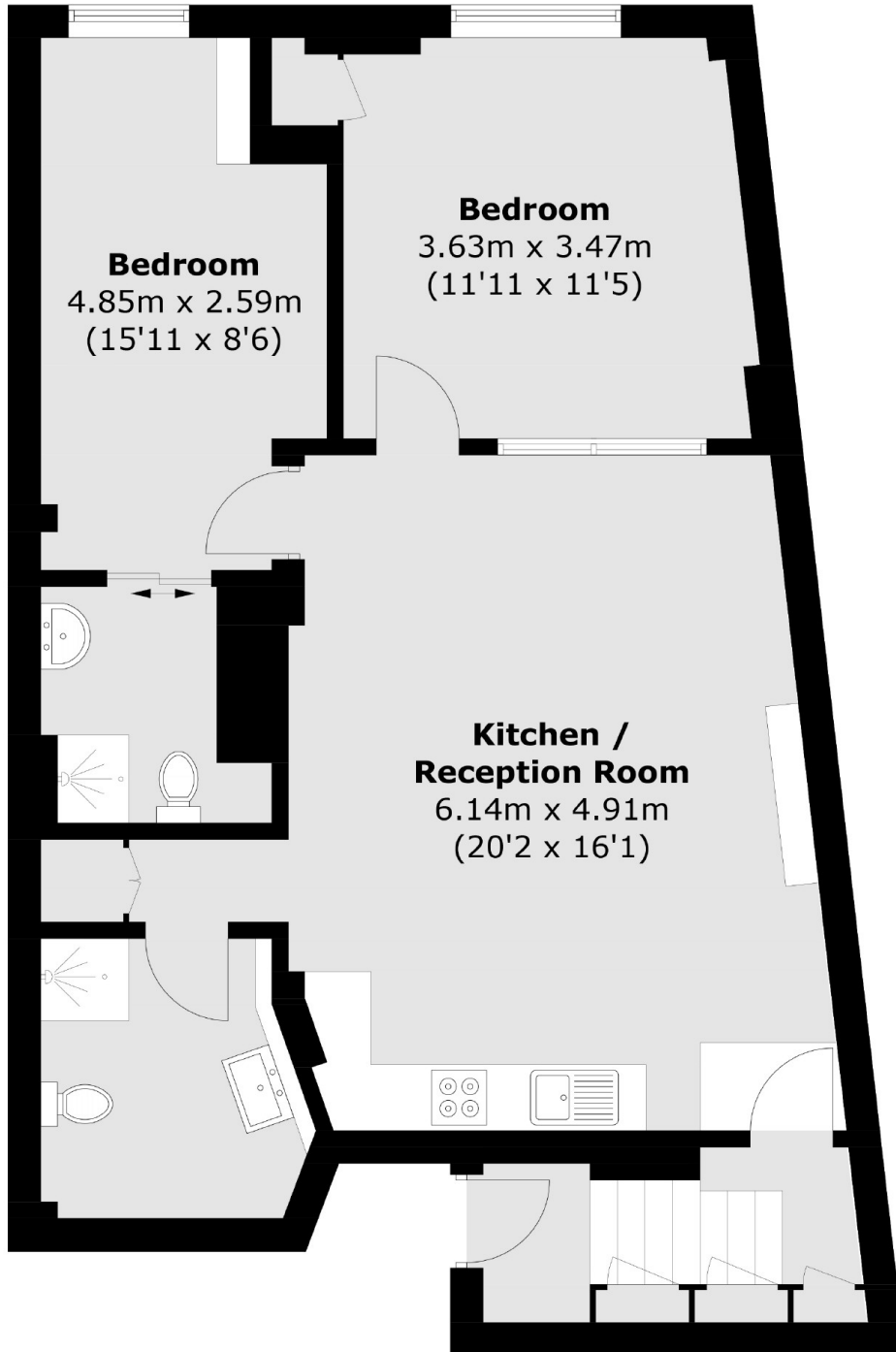
A two bedroom property located in a secure gated and characterful Victorian building. This apartment has an open plan kitchen and reception room with ample space to dine, two double bedrooms and two bathrooms. University House also overlooks the Museum Gardens and has the famous York Hall Public Baths at the end of the road,

Located on the tree-lined Victoria Park Square, University House is around the corner from Bethnal Green underground and is within close proximity to Victoria Park and its village where you will find local restaurants and cafés.

Features

- OIEO
- Two Bedroom
- Open Plan Kitchen/Reception
- Victorian Conversion
- Gated Development
- Chain Free

Victoria Park Square, London, E2



Total area (approx.): 75.1sq. m (808.4 sq. ft)