



## Tanners Yard, E2

£595,000

A two bedroom apartment located on the first floor of a secure, gated mews development close to the City and Shoreditch. The apartment has recently had a new Leicht kitchen. The bathroom has recently renovated with a wet room and shower. The property comprises of a reception room with open-plan kitchen, master bedroom, second bedroom and bathroom. There is also the added benefit of a balcony located off the main reception/kitchen that looks over a shared courtyard.

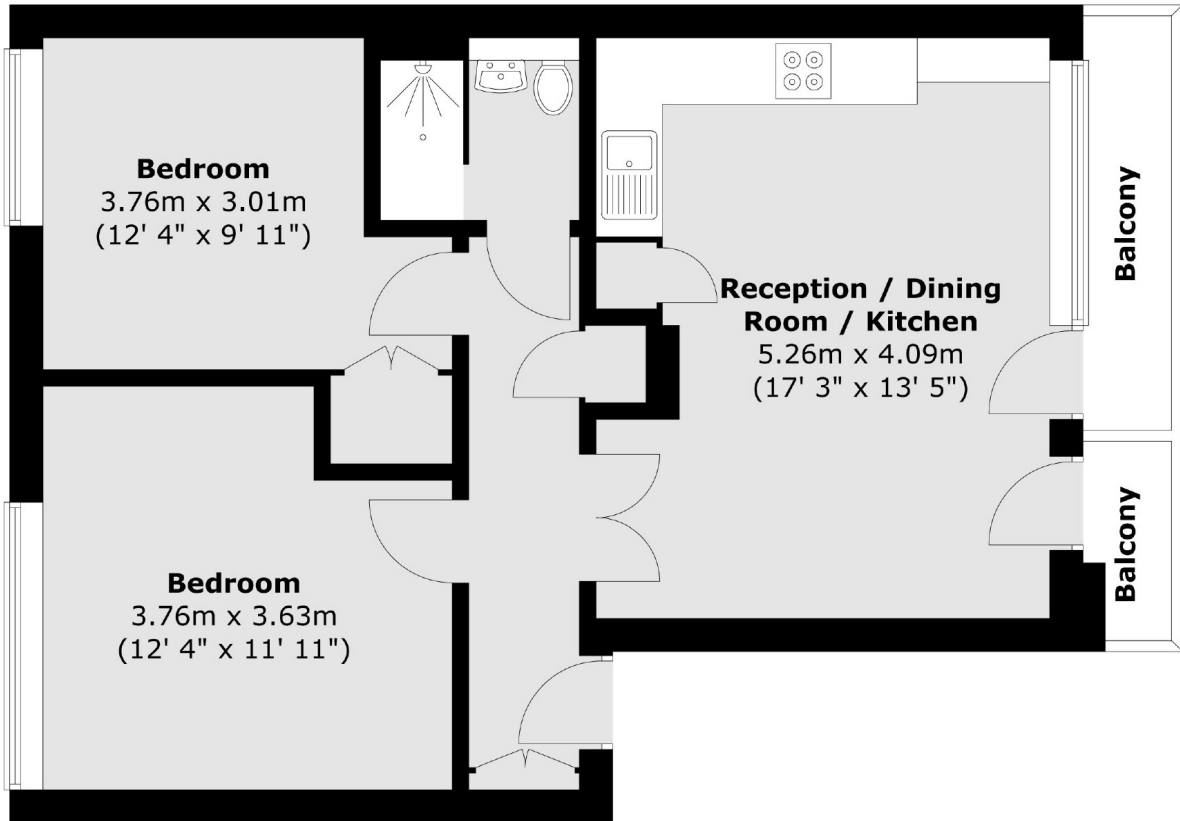
Tanners Yard is in close range to local shops and amenities of Hackney Road with Columbia Road and Broadway market within easy reach. Victoria Park and the charming Victoria Park Village with its quaint array of shops, restaurants and bars are on your doorstep. Brick Lane and Spitalfields Market can also be found a little further afield with all transport links to the City and the West End. The nearest stations are Bethnal Green Underground Station (Central Line) and Cambridge Heath (National Rail) as well as the many bus routes.

### Features

- Two Bedroom
- First Floor
- Recently Refurbished
- Open Plan Living Area
- Private Balcony
- Gated Development

# Tanners Yard, London, E2

## First Floor



Total area (approx.) : 55.8 sq. m (601 sq. ft)  
Total balcony area (approx.) : 3.9 sq. m (42 sq. ft)