



Weymouth Terrace, E2 £350,000

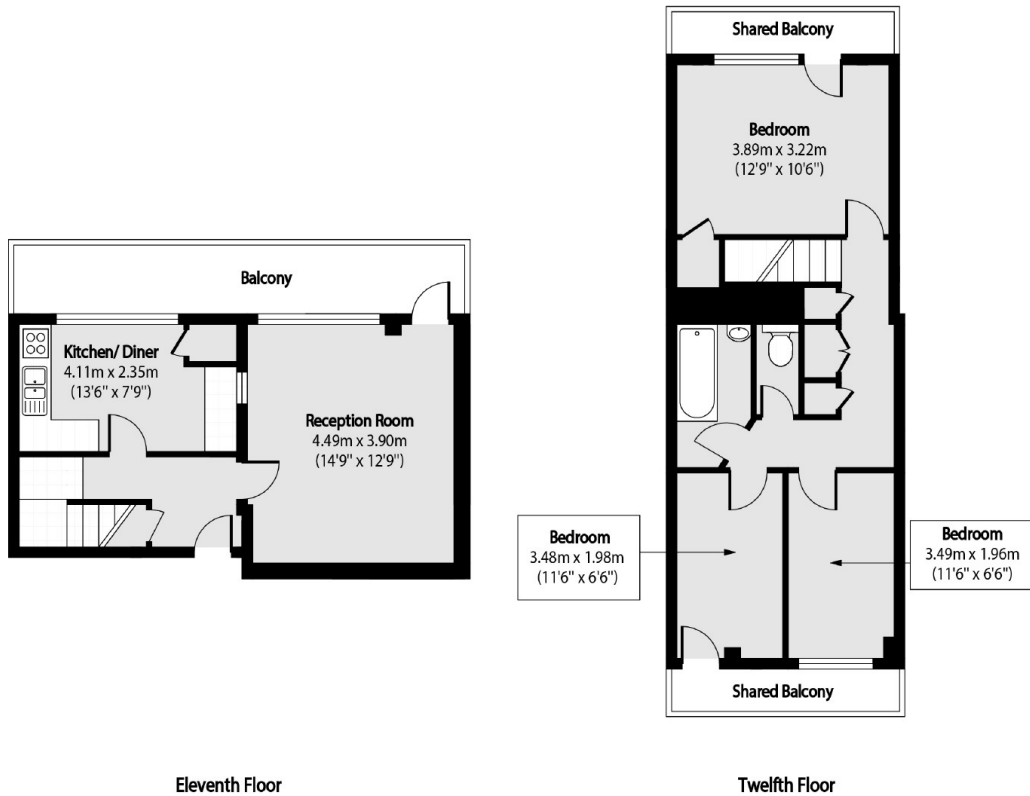
A three bedroom split level apartment situated on the eleventh and twelfth floors, the property offers a sizeable space exceeding 850 square feet internally. The apartment comprises of three well-proportioned bedrooms and a family bathroom on the upper floor, with a reception room and separate sit-in kitchen on the lower floor, with direct access to a private balcony.

A short walk from the infamous Columbia Road Flower Market, Fellows Court is ideally situated for easy access across the City with Hoxton Station nearby, as well as Old Street and Bethnal Green stations all within walking distances.

Features

- Cash Buyers Only
- Chain Free
- Three Bedrooms
- Split Level
- Two Separate Balconies
- Modernising Potential

Weymouth Terrace, London, E2



Total area (approx): 80.93 sq m (871 sq. ft)