



London Terrace, E2 £480,000

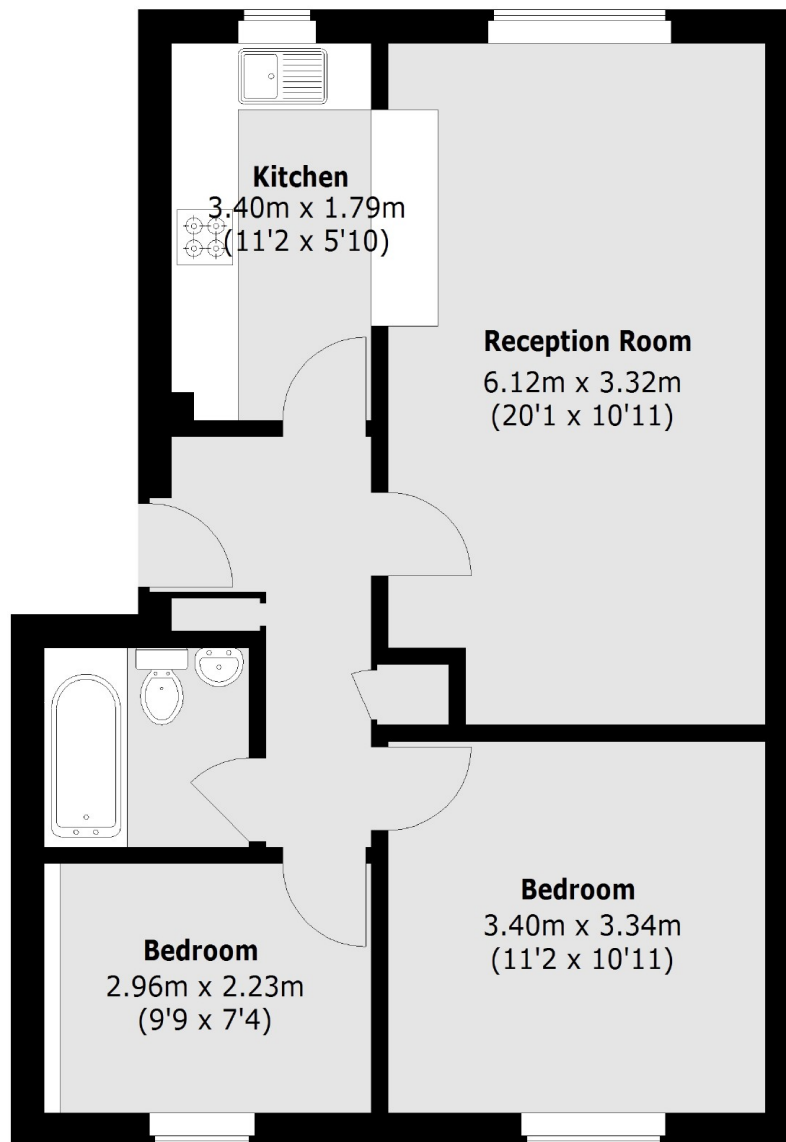
A two bedroom lateral apartment located within a secure gated development on Hackney Road. This apartment has a semi open plan kitchen and living room, communal terrace area and generous family bathroom.

Situated within walking distance to the City and nestled between Columbia Road Flower Market and Broadway Market, this property has an abundance of vibrant cafes, restaurants, and shops on its doorstep. Transport links include Hoxton Station under half a mile walk and Old Street Station under a mile away.

Features

- Two Double Bedrooms
- Lateral Layout
- Hackney Road Location
- Communal Garden
- Secure and Gated

London Terrace, London, E2



Total area (approx.): 56.63 sq. m (610 Sq. ft)