



Westland Place, N1

£850,000

A two double bedroom, duplex apartment on the top floor of Westland Place. This modern apartment has two bathrooms, a second reception room/possible third bedroom, open plan kitchen reception room with vaulted ceilings and a private roof terrace.

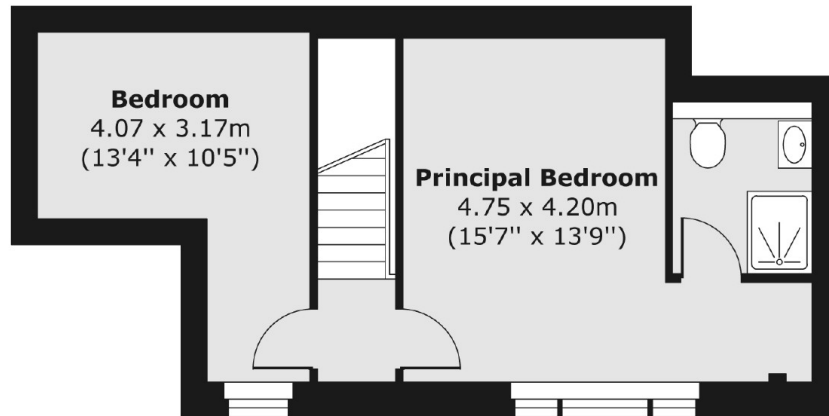
A quarter of a mile from Old Street Station and The Silicon Roundabout. The Regents Canal, shops, bars, and restaurants of Shoreditch and Hoxton Square are all a half a mile away.

Features

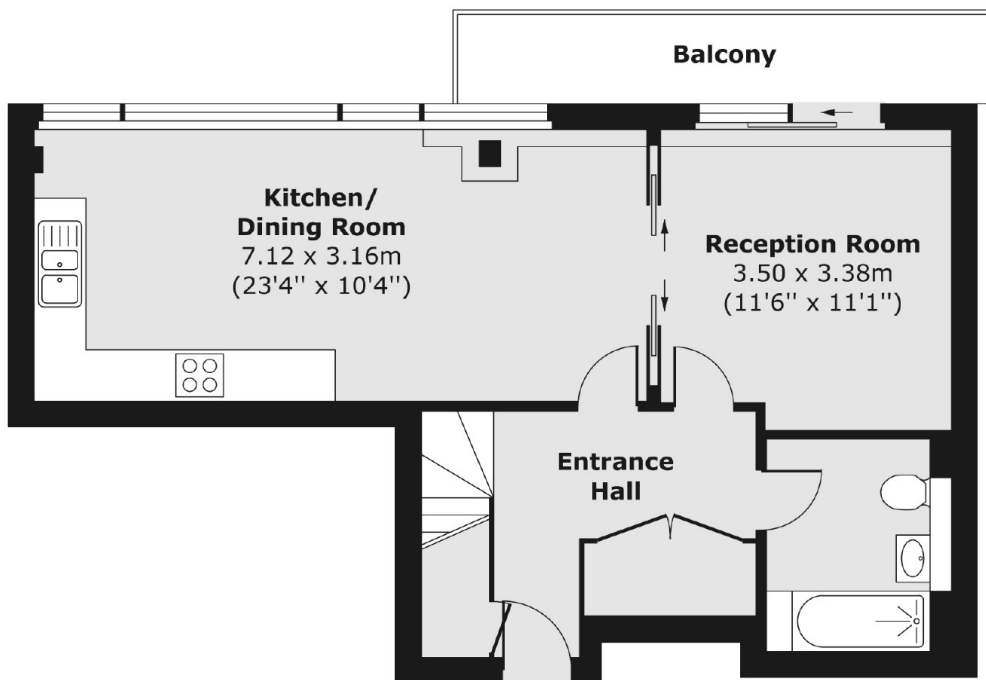
- Two Bedrooms
- Two Bathrooms
- Private Terrace
- Open Plan
- Chain Free
- Long Lease

Westland Place, London, N1

Sixth Floor



Fifth Floor



Total area (approx.) 82.85 sq. m (892 sq. ft)
Balcony area (approx.) 6.47 sq. m (70 sq. ft)