



St. John Street, EC1M

£625,000

A one double bedroom apartment located within a small residential boutique development. This modern apartment has an abundance of period features including high ceilings, sash windows, feature fireplace and wooden flooring. It is being sold chain free.

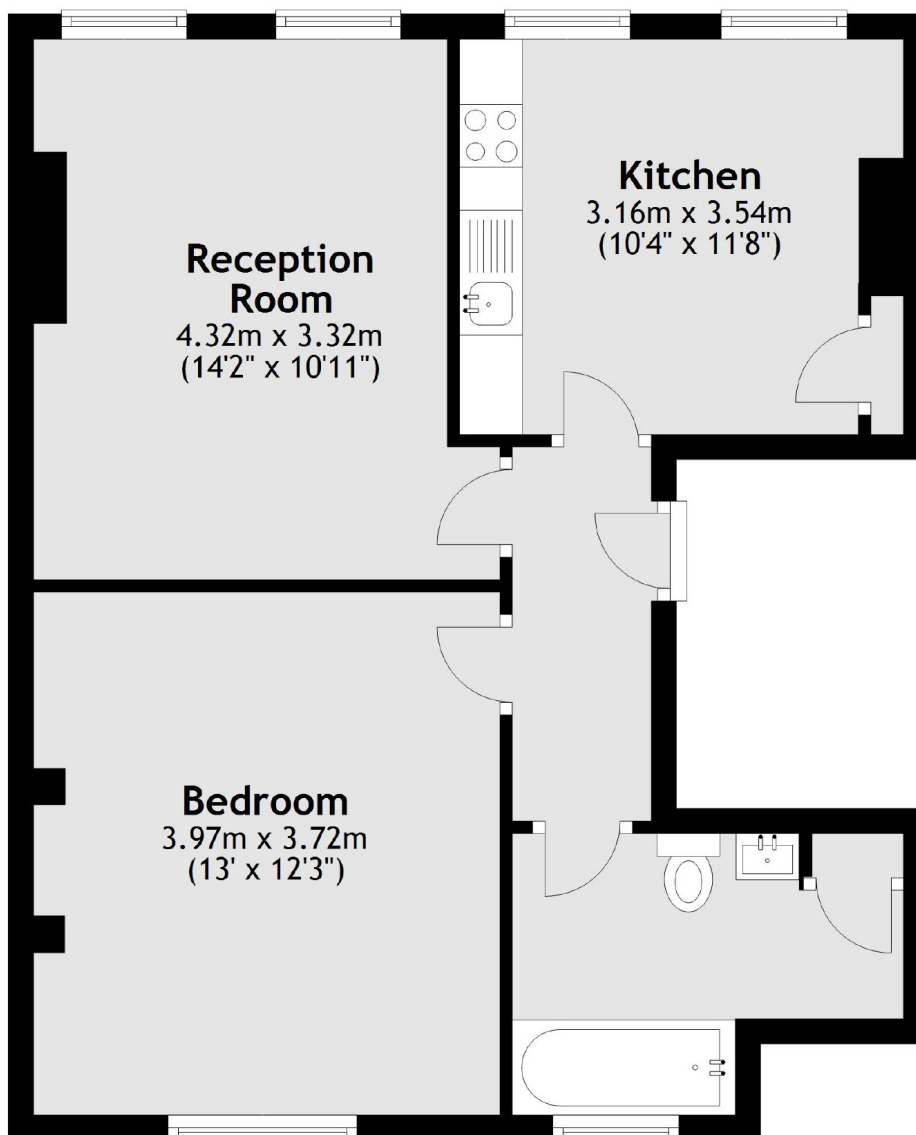
This apartment is located opposite West Smithfield market and is surrounded by popular restaurants, cafes and shops. It is conveniently located 200 yards from Farringdon station on the Elizabeth Line.

Features

- Victorian Conversion
- Close To Elizabeth Line
- High Ceilings
- Wooden Floors
- Fireplace
- Chain Free

**St. John Street,
London, EC1M**

Second Floor



Total area: approx. 52.3 sq. metres (562.7 sq. feet)