



## St. John Street, EC1M

£550,000

A one double bedroom apartment with a balcony located within a small residential boutique development. This modern apartment has an abundance of period features including sash windows, feature fireplace and wooden flooring. It is being sold chain free.

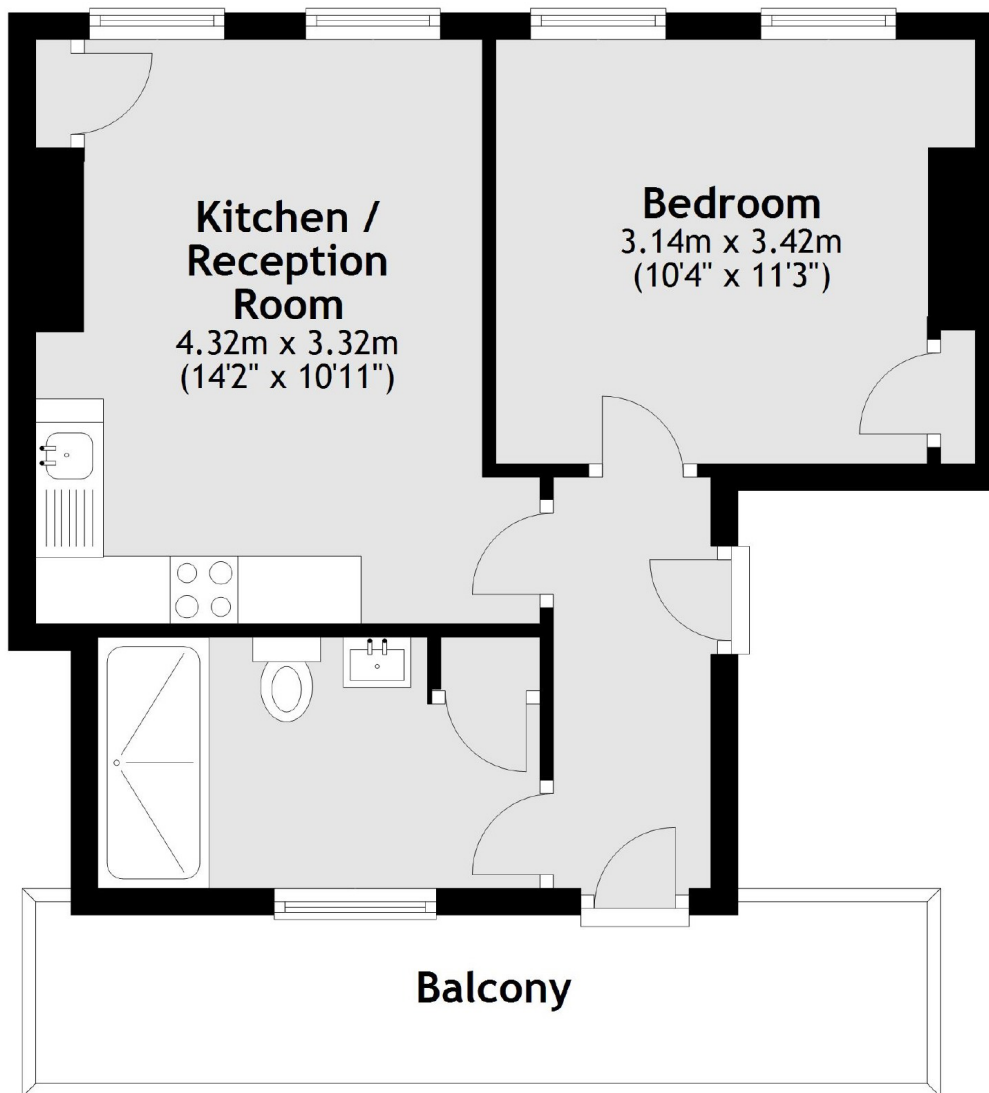
This apartment is located opposite West Smithfield market and is surrounded by popular restaurants, cafes and shops. It is conveniently located 200 yards from Farringdon station on the Elizabeth Line.

### Features

- Victorian Conversion
- Balcony
- Close To Elizabeth Line
- High Ceilings
- Wooden Floors
- Fireplace
- Chain Free

**St. John Street,  
London, EC1M**

## Fourth Floor



**Main area: Approx. 36.6 sq. metres (393.7 sq. feet)**  
Plus balconies, approx. 8.9 sq. metres (95.4 sq. feet)

**Dexters**

Shoreditch  
44 Great Eastern Street  
London  
EC2A 3EP  
Sales  
0207 483 6371

Energy Rating: - We aim to make our particulars both accurate and reliable. However they are not guaranteed; nor do they form part of an offer or contract. If you require clarification on any points then please contact us, especially if you're traveling some distance to view. Please note that appliances and heating systems have not been tested and therefore no warranties can be given as to their good working order.

 **RICS** | Regulated  
Estate Agent  
and Letting Agent

[dexters.co.uk](http://dexters.co.uk)