



Knottisford Street, E2

£425,000

Arranged over the first & second floor, a bright and airy, three double bedroom, split level maisonette, with a private balcony. The property is bright and airy throughout and comprises of a kitchen and a spacious reception that leads to the balcony on the first floor. The second floor consists of three bright double bedrooms, bathroom, and separate WC.

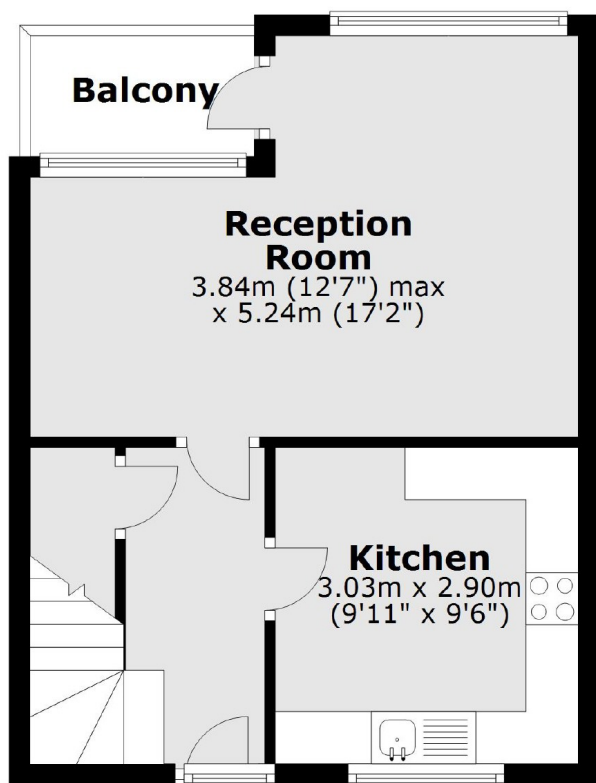
Clynes House is excellently placed for Bethnal Green tube which is under half a mile away, connecting you to various parts of the City. Victoria Park is close by with its open green spaces and Regents Canal opens up its path, giving easy access to both Canary Wharf and the Angel Islington.

Features

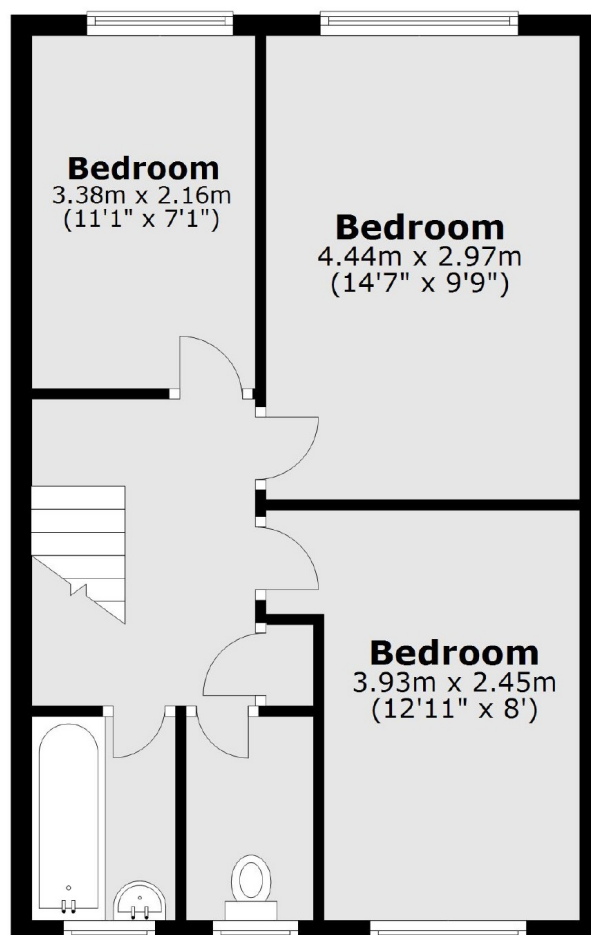
- Three Double Bedrooms
- Split Level
- Private Balcony
- Chain Free
- Good Transport Links
- Close to Local Amenities

Knottisford Street, London, E2

First Floor



Second Floor



Main area: Approx. 77.7 sq. metres (836.4 sq. feet)
Plus balconies, approx. 2.5 sq. metres (26.7 sq. feet)