



Mitre Street, EC3A

£1,250,000

Dexters



Mitre Street, EC3A

A split-level penthouse apartment of generous proportions. Consisting of two double bedrooms, two bathrooms, open plan kitchen/dining/reception room leading onto a private balcony.

An unique opportunity to own this stylish split-level penthouse. The property has an open plan reception room with wood floors, a fully integrated modern kitchen and floor-to-ceiling bi folding doors that are south facing for optimum light and leads to the private balcony benefiting from views of the City.

Downstairs there are two good-size double bedrooms both having en suite bathrooms and built in wardrobes and a separate W/C.

The property is conveniently close to all the shops, bars and restaurants that Bishopsgate, Bank and Fenchurch Street have to offer. Aldgate, Aldgate East and Fenchurch Street stations are all less than a mile away.

Features

Offers in Excess of
Penthouse
Two Bedrooms
Private Balcony
Integrated Kitchen Appliances
City View

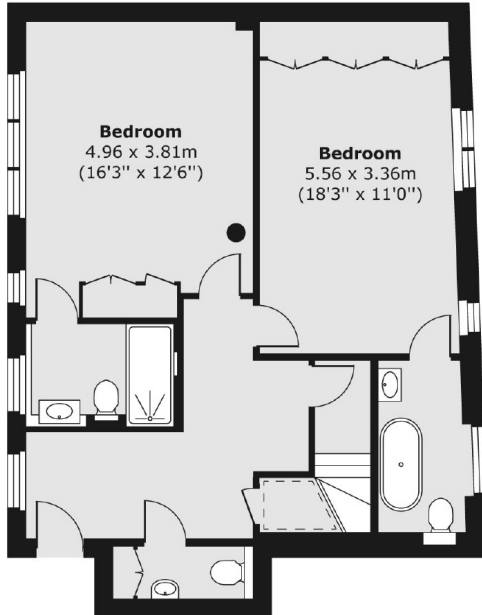




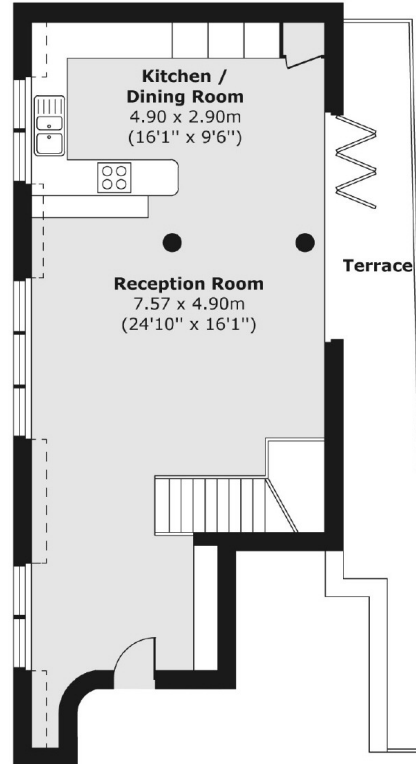


Mitre Street, London, EC3A

Fourth Floor



Fifth Floor



Total area (approx.) 114.76 sq. m (1,235 sq. ft)
Terrace area (approx.) 12.81 sq. m (138 sq. ft)