



Gosset Street, E2

£550,000

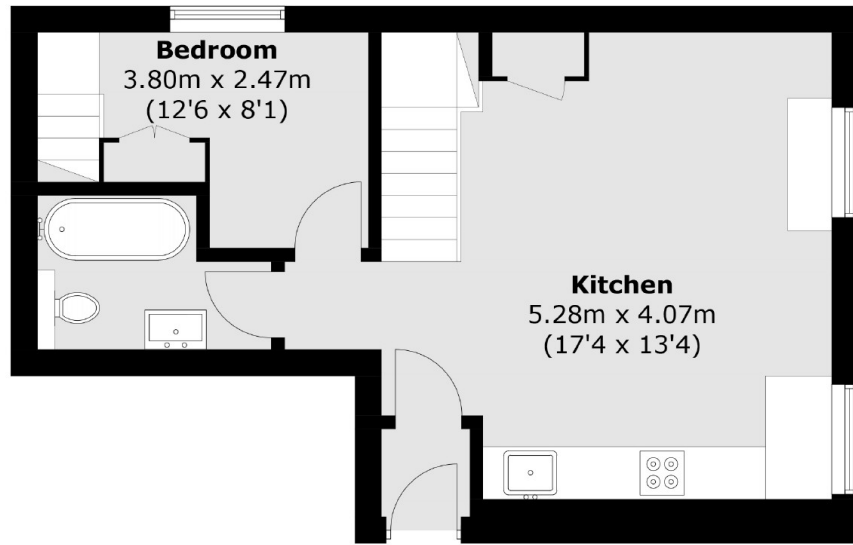
A property measuring just over 700 sq ft split level ground floor maisonette, just off Jesus Green. In the converted Gosset Arms, this former pub apartment features an additional study/guest room as well as some fantastic original features such as high ceilings and wooden flooring.

Jesus Green welcomes Columbia Road Flower Market on Sundays and great open green spaces. Shoreditch High Street and Bethnal Green underground station within walking distance.

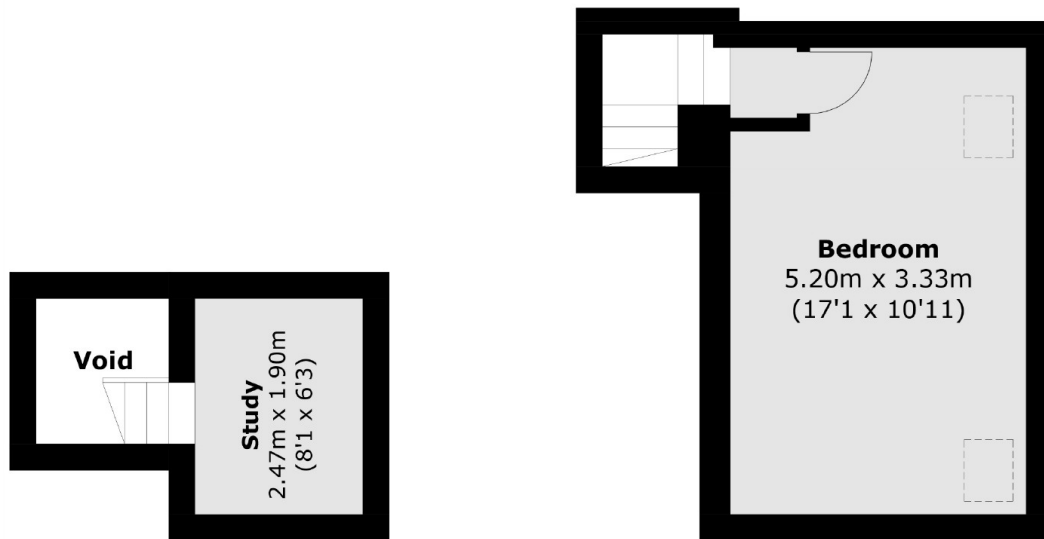
Features

Hard Wood Flooring
Sash Windows
Two Double Bedrooms
Victorian Pub Conversion
Close to Columbia Road
OIEO

Gosset Street,
London, E2



Ground Floor



Mezzanine

Lower Ground Floor

Total area (approx.): 66.7 sq. m (717.9 sq. ft)
(Excluding Void)