



Old Street, EC1V

£550,000

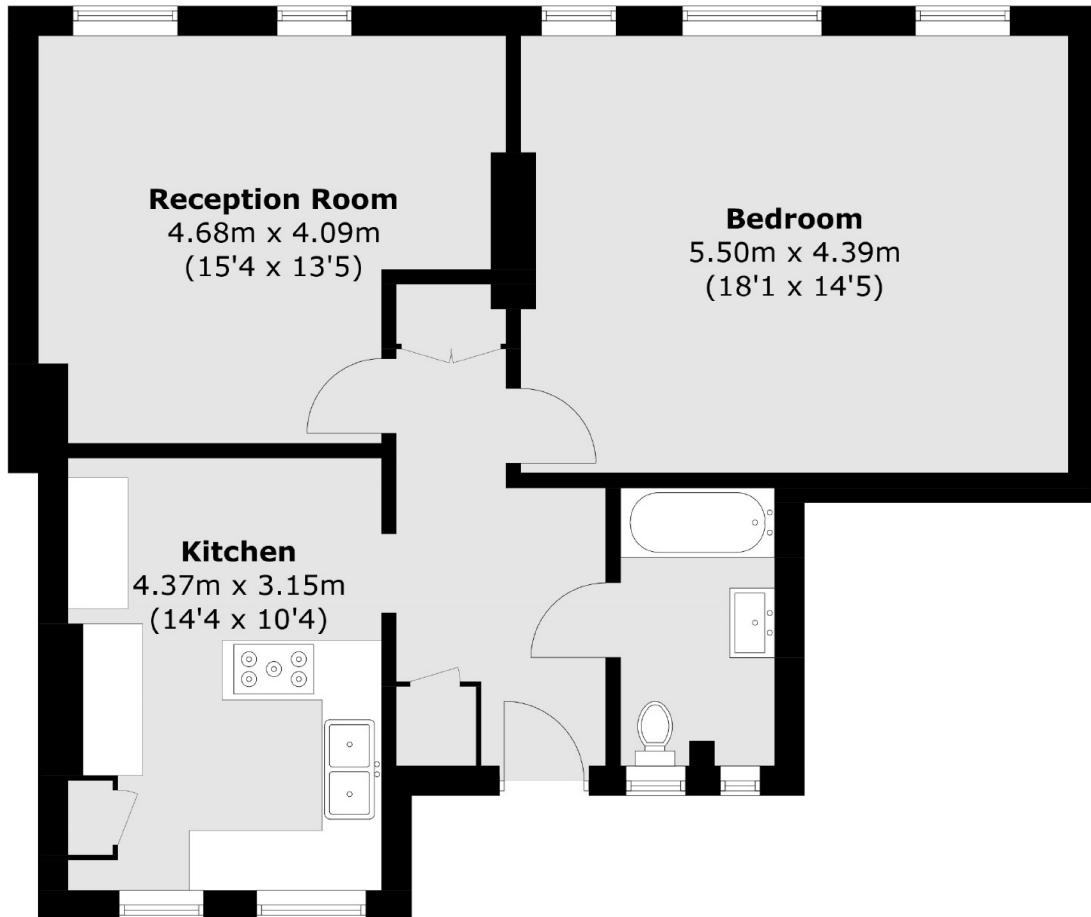
A one bedroom apartment set within the ground floor of a well presented building. The property features a bright and airy reception room, 263 sqft bedroom, separate fitted kitchen, family bathroom and ample amount of storage.

The Central London neighbourhoods of Old Street, Clerkenwell and Farringdon are within easy access to the rest of the City. Excellent underground travel connections from Barbican and Farringdon Station allowing quick access toward the West End or East to Tower of London and Liverpool Street. Canary Wharf is also within easy reach. Areas of interest include Smithfield Meat Market and adjacent highly-rated restaurants, the food outlets and eateries on Charterhouse Street, the Sadlers Wells Complex and the Barbican Arts Centre.

Features

- Chain Free
- Spacious Reception Room
- Good Size Bedroom
- Ample Storage
- Separate Kitchen
- Travel Connections

Old Street, London, EC1V



Total area (approx.): 70.5 sq. m (758.9 sq. ft)