



## Old Montague Street, E1 £525,000

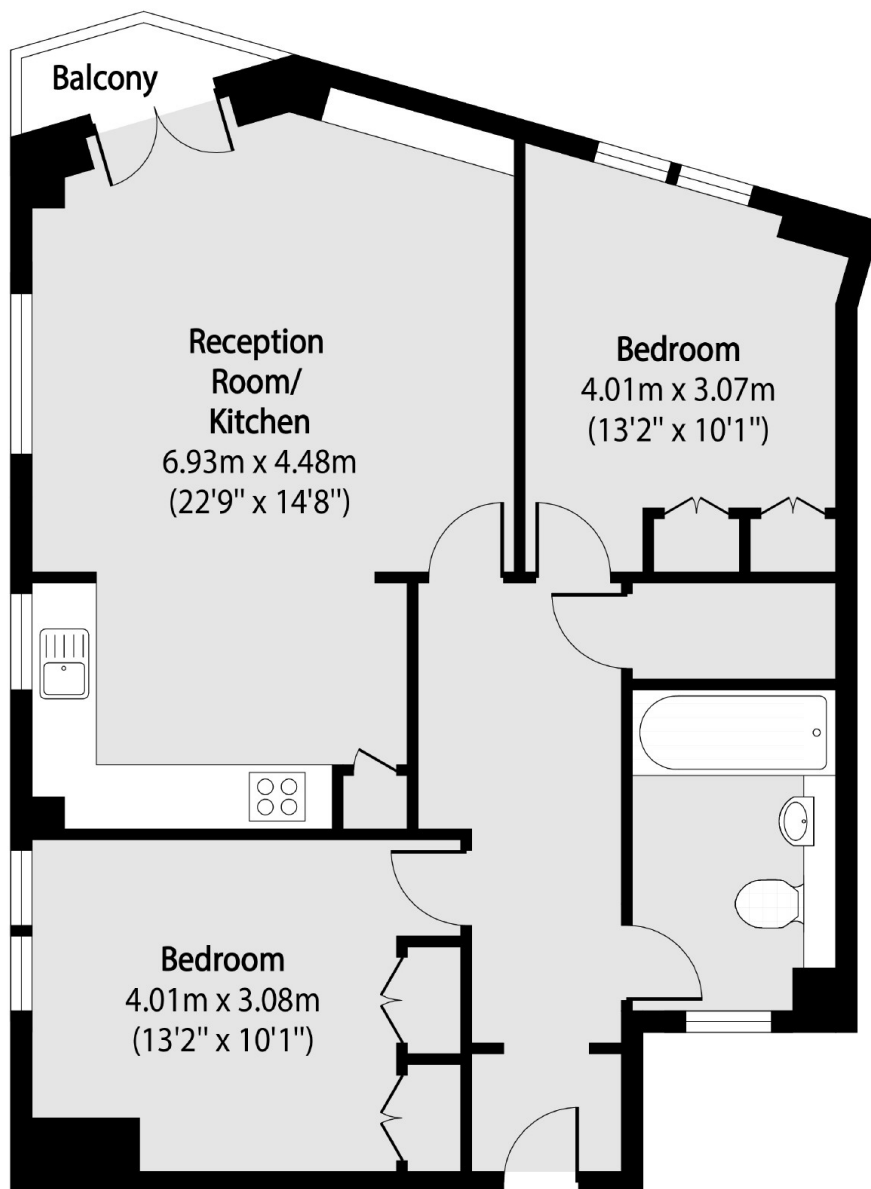
A top floor two bedroom apartment situated within walking distance of Brick Lane, Shoreditch High Street and Spitalfields. The property comprises of an open plan kitchen/reception room with integrated appliances, a south facing balcony, two double bedrooms and a family bathroom.

The property is well-located for public transport as it is situated within close proximity of the City with Aldgate and Aldgate East stations nearby. Liverpool Street Station and Shoreditch High Street (Overground) are also a short walk away

### Features

- Two Bedrooms
- Top Floor
- Balcony
- Close Proximity to the City
- Good Transport Links
- Shops and Amenities Nearby

# Old Montague Street, London, E1



Total area (approx): 67.93 sq m (731 sq. ft)

Balcony total area (approx): 1.23 sq m (13 sq. ft)