



## Evelyn Walk, N1

£375,000

A two double bedroom flat with a good sized living area, a separate kitchen and shower room. The property also has some lovely features including a fireplace in the reception.

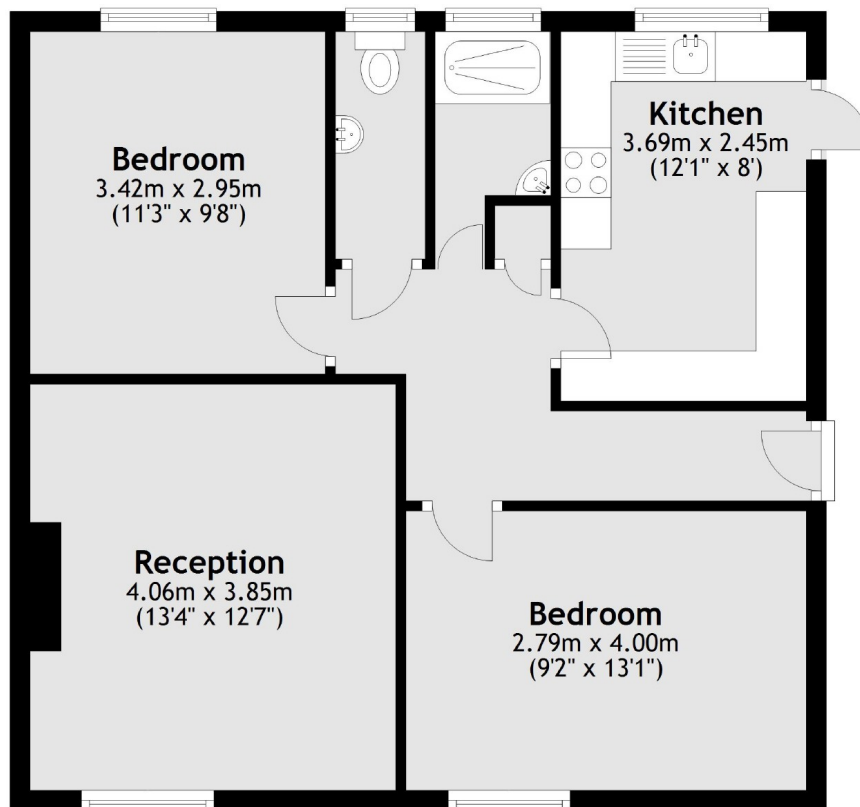
Evelyn Court is only a quarter of a mile from Shoreditch Park and under a half mile from the Regents Canal and Old Street station.

### Features

- Two Double Bedrooms
- Newly Refurbished
- Original Features
- Secure Block
- Great Location
- Close To Transport Links
- EWS1 Compliant

# Evelyn Walk, London, N1

## Third Floor



Total area: approx. 58.7 sq. metres (632.3 sq. feet)