



Shepherdess Place, N1

£675,000

A stunning one double bedroom apartment in the iconic Chocolate Studios. A warehouse conversion apartment at Shepherdess Walk only 0.3 miles from Old Street roundabout and London's Tech City.

Located just off City Road, Chocolate Studios is 0.3 Miles from Old Street Underground station and Shoreditch and 0.8 miles from Angel station and High Street.

Features

- Warehouse Conversion
- Wooden Floors
- Exposed Brickwork
- High Ceilings
- Modern Kitchen
- Steel Framed Windows



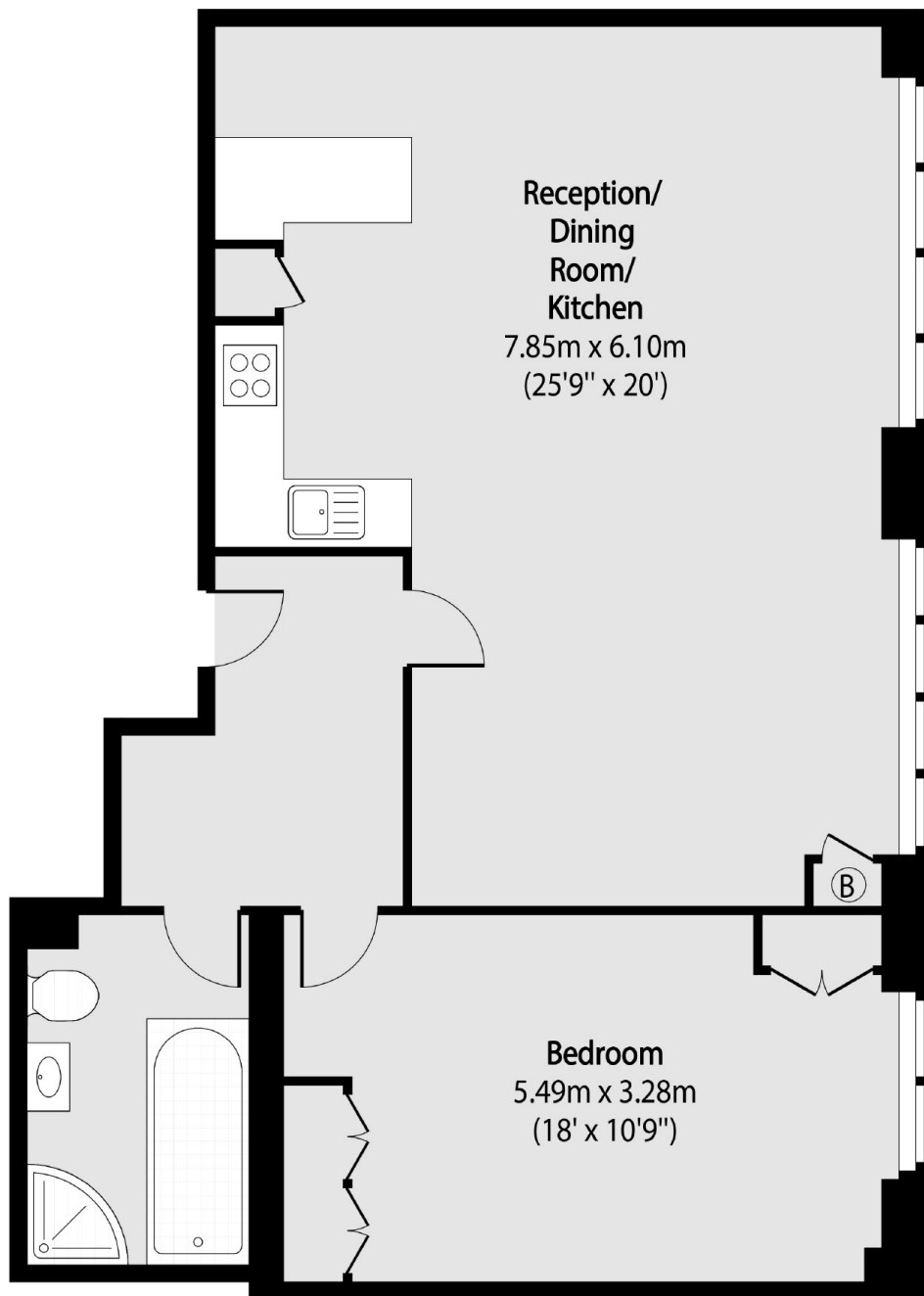
Shepherdess Place, N1

A stunning one double bedroom apartment in the iconic Chocolate Studios. A warehouse conversion apartment at Shepherdess Walk only 0.3 miles from Old Street roundabout and London's Tech City.

Impressive high ceilings and wood flooring throughout, the apartment has an open plan reception area and kitchen measuring approximately 25' by 19'. The modern kitchen has granite work tops and integrated appliances. There is a large 17' bedroom and modern 4 piece bathroom. With exposed brickwork, steel beams, large steel framed windows, high ceilings and column radiators this is a stunning warehouse apartment in a great location.



Shepherdess Place, London, N1



Total area (approx): 74.32 sq m (800 sq. ft)