



Morpeth Street, E2

£825,000

Dexters



Morpeth Street, E2

A three double bedroom three story maisonette that measures set within a converted Victorian house, which measures over 1400 sqft. This unique property has a separate kitchen with space for dining and two further living spaces with feature fireplaces. This property is chain free and has a dedicated off street parking space.

On entering at ground level there is a set of stairs that leads you up to the first floor. This level has the majority of living space and maintains many of its original Victorian features. There is a large lounge with sash windows and fireplace, kitchen with space for dining, large storage and laundry room. In addition there is a dining room, which can be used a bedroom.

At the upper first floor there is a double bedroom with skylight and family shower room. On the top floor is the principle bedroom with exposed beams and walk in wardrobe. The property is being offered chain free.

Morpeth street is tucked away and is 50 yards from Meath Gardens. The nearest tube is Bethnal Green on the central line, under half a mile walk. The vast array of cafés, shops and eateries of Bethnal Green and Roman Road can be found 100 yards from the property.

Features

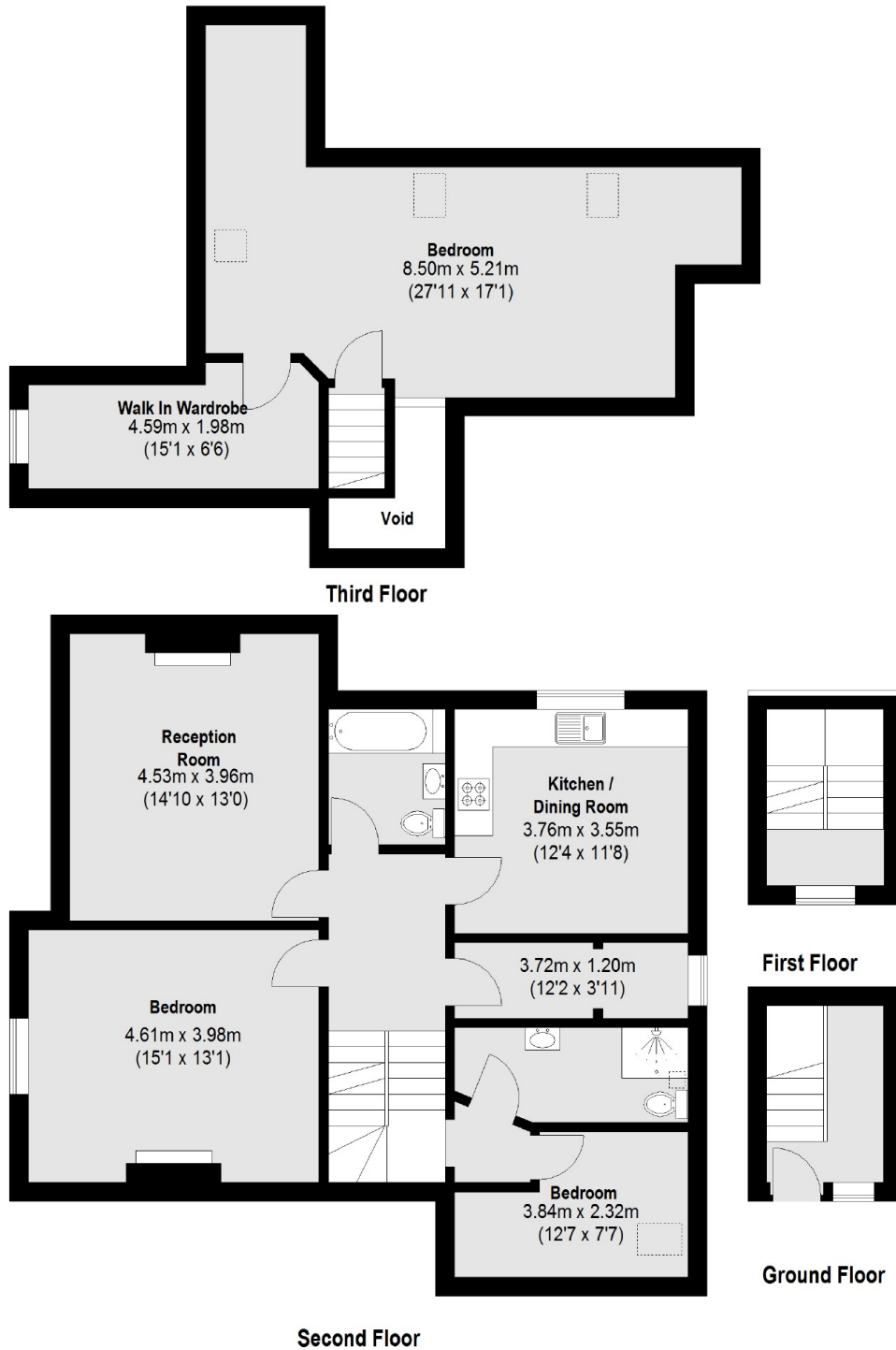
- Three Double Bedrooms
- Victorian Conversion
- Off Street Parking
- Maisonette
- Period Features
- Separate Kitchen







Morpeth Street, London, E2



Total area (approx.): 138.09 sq. m (1486 Sq. ft) (Excluding Void)