



Ebenezer Street, N1

£925,000

A two bedroom apartment which is split level and spans over 1450 sqft. This property has a large south facing terrace, two double bedrooms which both have direct access to the terrace, an ensuite and an open plan living room space and kitchen. The building also has lots of amenities such as a gym, cinema and a secure parking space.

This property is under half a mile from Old Street on the Northern Line. The many restaurants, shops and cafes of Old Street can be found under a quarter of a mile away with Shoreditch just over half a mile walk.

Features

- OIEO
- Two Double Bedroom
- Secure Parking Space
- 400 sqft Roof Terrace
- Concierge
- Gym
- Cinema
- Share of Freehold



Ebenezer Street, N1

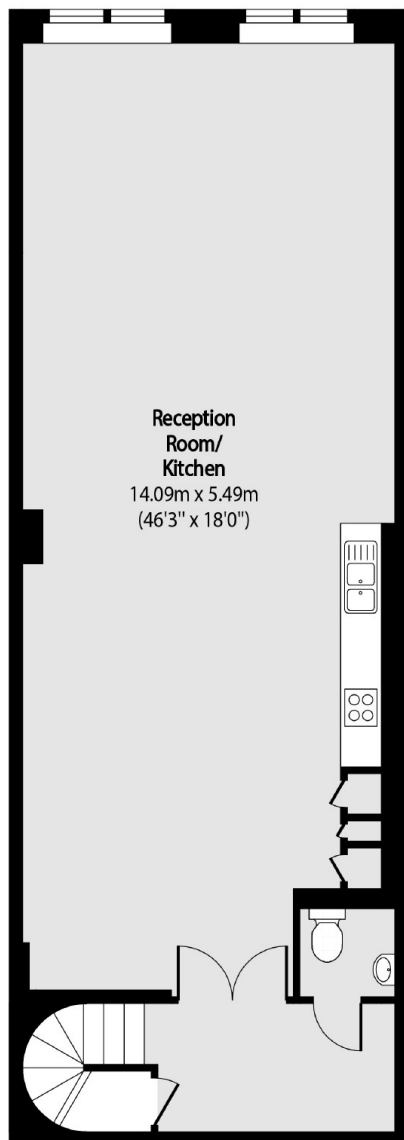
As you enter through a set of double doors you are greeted by a hallway and WC can be found to the right. Walking through another set of double doors you enter in the open plan living and kitchen area which measures just shy of 1000sqft.

Upstairs the property has two double bedrooms, one of which has ensuite but both have direct access to the 400 sqft roof terrace. This floor also has a further bathroom and storage cupboard.

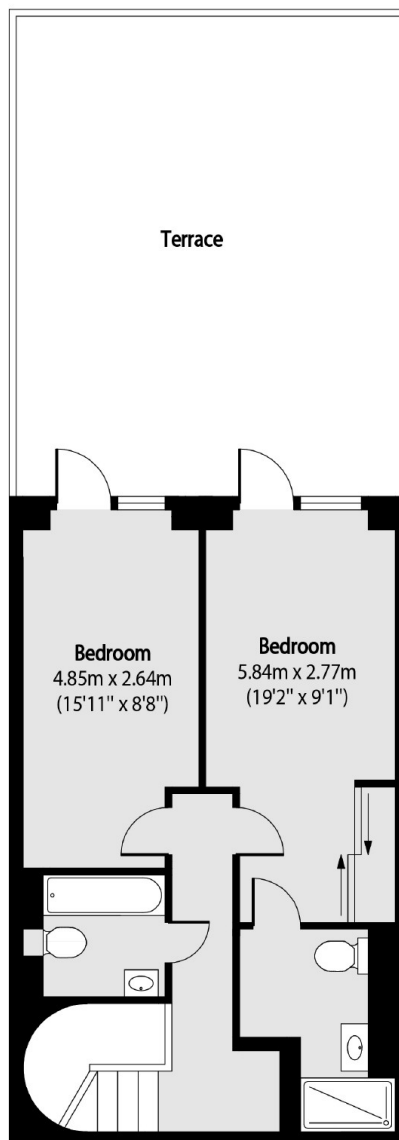
The building also benefits from a gym, concierge and a communal roof terrace. It is being sold with a Share of the Freehold and chain free.



Ebenezer Street, London, N1



First Floor



Second Floor

Total area (approx): 137.48 sq m (1479 sq. ft)

Terrace total area (approx): 40.47 sq m (435 sq. ft)