



East Arbour Street, E1

£780,000

Dexters



East Arbour Street, E1

A two double bedroom Georgian terrace house with a 30 ft garden, glass side return extension and well maintained period features throughout.

As you enter through the front door there is the original panelled hallway and dual aspect living room to your right. The living room has wooden boarded flooring finished in gloss white, two sash windows and ornate fireplace. Down the corridor there is understair storage and access into kitchen. The kitchen has been extended with a glass roof side return and glass sliding doors. The kitchen has a fully working aga cooker, dining space and American style fridge.

On the first floor there is the family bathroom with a bath and separate shower unit. There is two double bedrooms both with wooden flooring, sash windows and high ceilings.

Arbour Square Gardens is set within a conservation area and is located under half a mile from Limehouse Station and over half a mile from Whitechapel and Stepney Green Stations.

Features

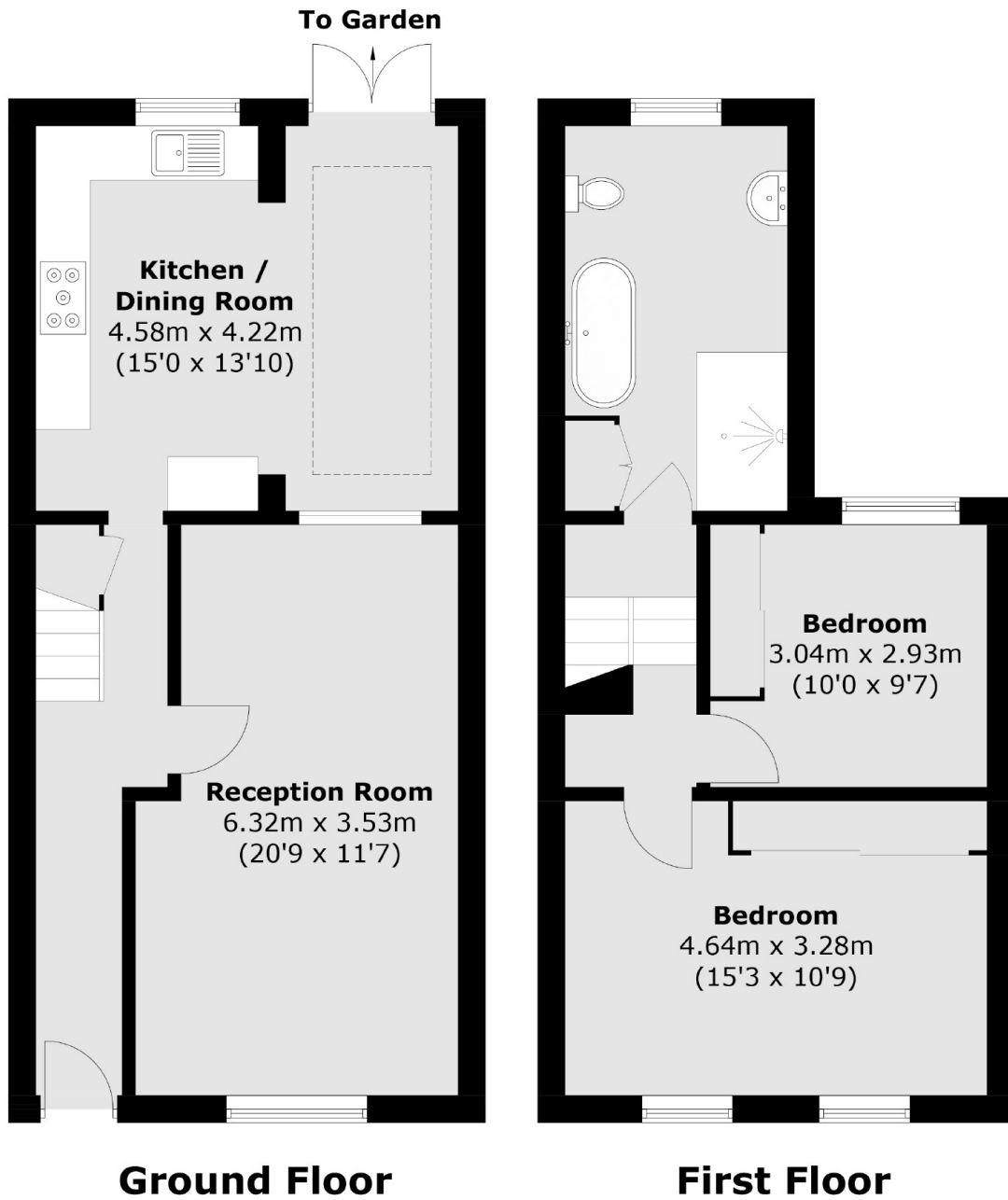
- Two Double Bedrooms
- Wooden Flooring
- Georgian Terrace
- Side Return Extension
- Sash Windows







East Arbour Street, London, E1



Total area (approx.): 90.2 sq. m (970.8 sq. ft)