



## Pinchin Street, E1

£475,000

A four bedroom apartment in Pinchin Street, there is a modern white high gloss kitchen with wood work tops, reception room with double doors out to the west facing balcony, bathroom and separate WC.

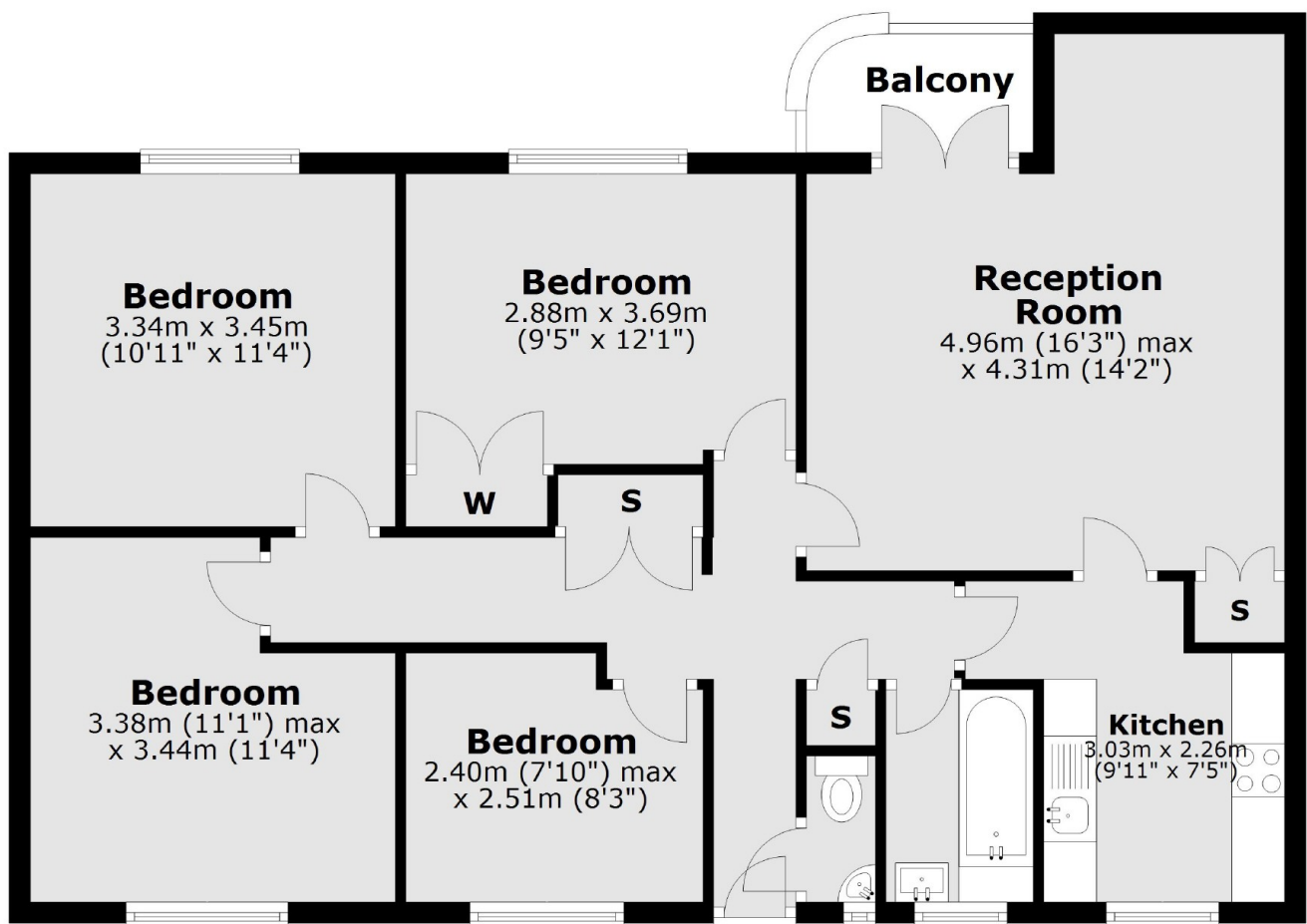
Centrally located the property is great for those who work in the City or Canary Wharf with Tower Hill and Aldgate East Stations along with Tower Bridge, St Katharine's Dock and the Tower of London only a half mile away.

### Features

- Four Bedrooms
- Balcony
- Lift Serviced
- Modern Kitchen
- Storage
- No Onward Chain

Pinchin Street,  
London, E1

## Second Floor



Total area: approx. 84.7 sq. metres (911.5 sq. feet)

### Contact

To arrange a viewing call our office on the number below or visit our website.



Energy Rating: C. We aim to make our particulars both accurate and reliable. However they are not guaranteed; nor do they form part of an offer or contract. If you require clarification on any points then please contact us, especially if you're traveling some distance to view. Please note that appliances and heating systems have not been tested and therefore no warranties can be given as to their good working order.