



The Green, Bury St. Edmunds, IP30 9BE

Rent - £1,600

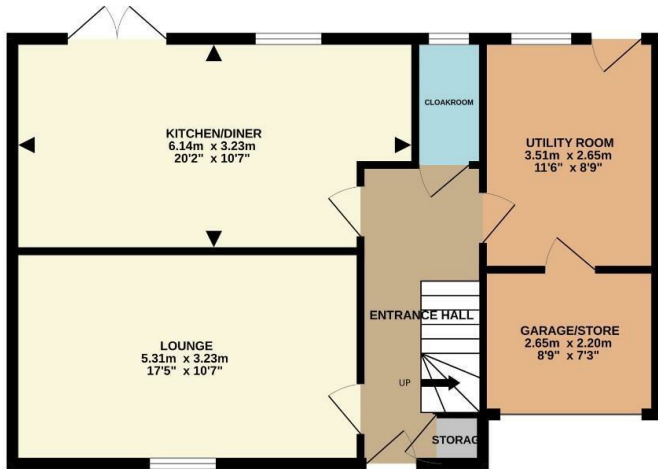
Deposit - £1,846

Located in the popular village of Hesselst is this 3 bedroom detached home that is offered to let immediately. The property backs on to a paddock and has parking for at least 3 cars to the front. Inside there the a fitted kitchen/diner, backing on to the garden, with granite work surfaces, range style cooker and integrated dish washer. There is also a lounge, utility room and cloakroom to the ground floor. Upstairs there is a en suite shower room to the main bedroom, a family bathroom and 2 further bedrooms. Contact us to book your viewing!

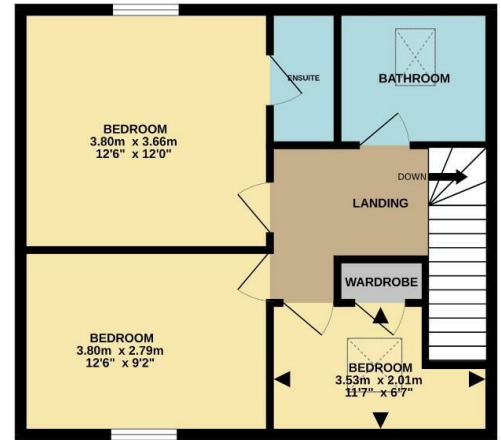
- 3 BEDROOM DETACHED HOME
- FAMILY BATHROOM, EN SUITE AND GROUND FLOOR CLOAKROOM
- ZONED UNDER FLOOR HEATING TO GROUND FLOOR
- UTILITY ROOM WITH WATER SOFTENER
- BACKING ON TO Paddock - SORRY NO PETS
- BUILT AND FINISHED TO AN EXTREMELY HIGH STANDARD
- KITCHEN/DINER WITH RANGE COOKER AND INTEGRATED DISH WASHER
- RADIATORS TO THE FIRST FLOOR
- PARKING FOR 3 PLUS VEHICLES
- AVAILABLE IMMEDIATELY - CONTACT US NOW TO BOOK YOUR VIEWING



GROUND FLOOR
61.6 sq.m. (663 sq.ft.) approx.



1ST FLOOR
46.4 sq.m. (499 sq.ft.) approx.



TOTAL FLOOR AREA : 107.9 sq.m. (1162 sq.ft.) approx.
Whilst every attempt has been made to ensure the accuracy of the floorplan contained here, measurements of doors, windows, rooms and any other items are approximate and no responsibility is taken for any error, omission or mis-statement. This plan is for illustrative purposes only and should be used as such by any prospective purchaser. The services, systems and appliances shown have not been tested and no guarantee as to their operability or efficiency can be given.
Made with Metropix ©2025

