



Stanningfield Road, Bury St. Edmunds, Suffolk, IP30 0TT

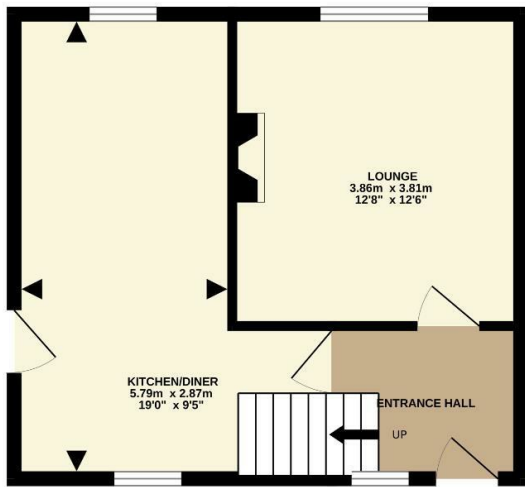
Rent - £1,300 PCM Deposit - £1,500

A 3 bedroom semi-detached house with large gardens and off road parking for 3 vehicles to the front. The property is available immediately and has a large kitchen/diner as well as the lounge to the ground floor. Contact us now to book your viewing.

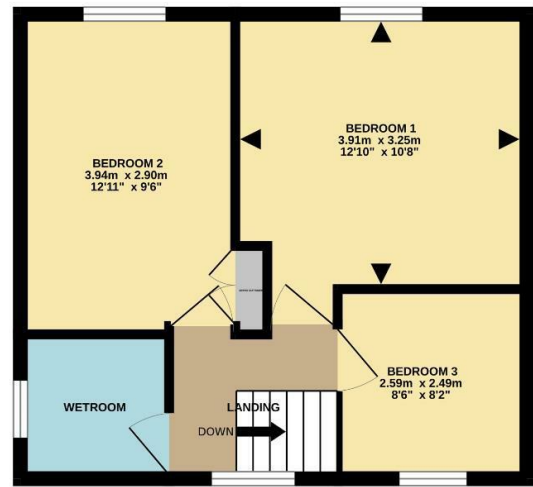
- SEMI-DETACHED HOUSE
- KITCHEN/ DINING ROOM
- 3 BEDROOMS (2 DOUBLES, 1 SINGLE)
- UNFURNISHED, EPC 63, D
- 3 CAR OFF ROAD PARKING
- VILLAGE LOCATION, SOUTH OF BURY ST EDMUNDS
- ENTRANCE HALL, SITTING ROOM
- WET ROOM
- OIL FIRED HEATING
- GENEROUS REAR GARDEN



GROUND FLOOR



1ST FLOOR



Whilst every attempt has been made to ensure the accuracy of the floorplan contained here, measurements of doors, windows, rooms and any other items are approximate and no responsibility is taken for any error, omission or mis-statement. This plan is for illustrative purposes only and should be used as such by any prospective purchaser. The services, systems and appliances shown have not been tested and no guarantee as to their operability or efficiency can be given.
Made with Metropix ©2025

